

## SERPINB8 Antibody

Catalog No: #40101

Orders: [order@signalwayantibody.com](mailto:order@signalwayantibody.com)Support: [tech@signalwayantibody.com](mailto:tech@signalwayantibody.com)

## Description

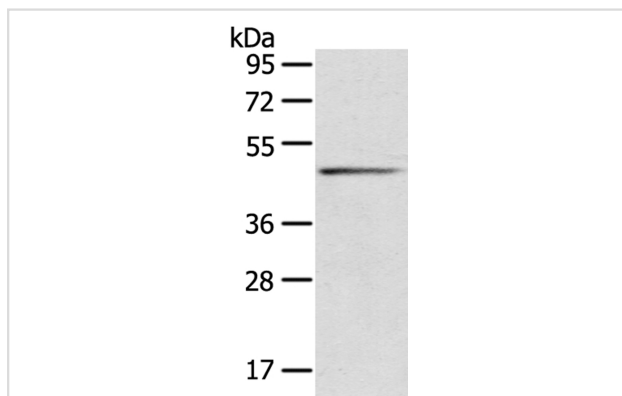
Product Name	SERPINB8 Antibody
Host Species	Rabbit
Clonality	Polyclonal
Purification	Antigen affinity purification.
Applications	WB IHC
Species Reactivity	Hu
Specificity	The antibody detects endogenous levels of total SERPINB8 protein.
Immunogen Type	Protein
Immunogen Description	Full length fusion protein
Target Name	SERPINB8
Other Names	PI8; CAP2
Accession No.	Swiss-Prot:P50452Gene Accssion:BC034528
Uniprot	P50452
GeneID	5271;
SDS-PAGE MW	43KD
Concentration	1.3mg/ml
Formulation	Rabbit IgG in pH7.4 PBS, 0.05% NaN <sub>3</sub> , 40% Glycerol.
Storage	Store at -20°C

## Application Details

Western blotting: 1:200-1:1000

Immunohistochemistry: 1:100-1:200

## Images

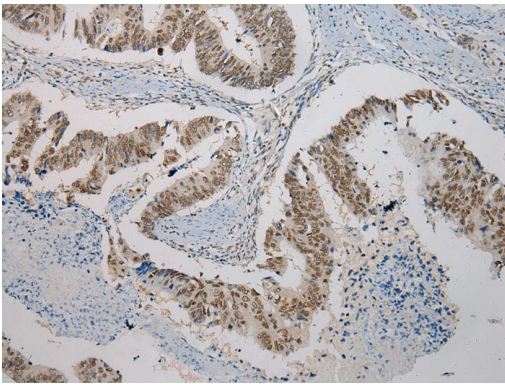


Gel: 8%SDS-PAGE

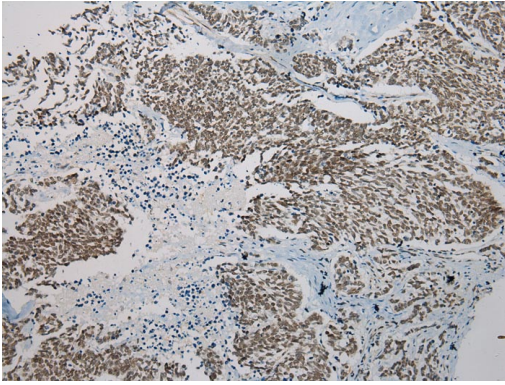
Lysate: 40ug Human normal liver tissuePrimary antibody:  
1/400 dilution

Secondary antibody dilution: 1/8000

Exposure time: 15 seconds



Immunohistochemical analysis of paraffin-embedded Human Colorectal cancer tissue using #40101 at dilution 1/200.



Immunohistochemical analysis of paraffin-embedded Human Lung cancer tissue using #40101 at dilution 1/200.

## Background

The superfamily of high molecular weight serine proteinase inhibitors (serpins) regulate a diverse set of intracellular and extracellular processes such as complement activation, fibrinolysis, coagulation, cellular differentiation, tumor suppression, apoptosis, and cell migration. Serpins are characterized by well-conserved a tertiary structure that consists of 3 beta sheets and 8 or 9 alpha helices.

Note: This product is for in vitro research use only