

SLC25A26 Antibody

Catalog No: #40108

Orders: order@signalwayantibody.comSupport: tech@signalwayantibody.com

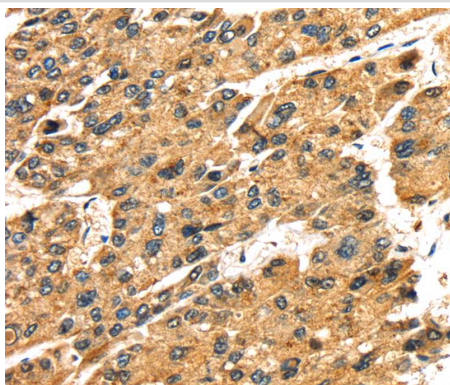
Description

Product Name	SLC25A26 Antibody
Host Species	Rabbit
Clonality	Polyclonal
Purification	Antigen affinity purification.
Applications	IHC
Species Reactivity	Hu
Specificity	The antibody detects endogenous levels of total SLC25A26 protein.
Immunogen Type	Protein
Immunogen Description	Fusion protein corresponding to residues near the C terminal of human solute carrier family 25 (S-adenosylmethionine carrier), member 26
Target Name	SLC25A26
Other Names	SAMC
Accession No.	Swiss-Prot:Q70HW3Gene Accssion:BC012852
Uniprot	Q70HW3
GeneID	115286;
Concentration	1.8mg/ml
Formulation	Rabbit IgG in pH7.4 PBS, 0.05% NaN ₃ , 40% Glycerol.
Storage	Store at -20°C

Application Details

Immunohistochemistry:1:25-1:100

Images



Immunohistochemical analysis of paraffin-embedded Human liver cancer tissue using #40108 at dilution 1/30.

Background

Mitochondrial carriers, including SLC25A26, are a family of transport proteins found mostly in the inner membranes of mitochondria. They shuttle metabolites and cofactors through the mitochondrial membrane?

Note: This product is for in vitro research use only