

SLC25A2 Antibody

Catalog No: #40109

Orders: order@signalwayantibody.comSupport: tech@signalwayantibody.com

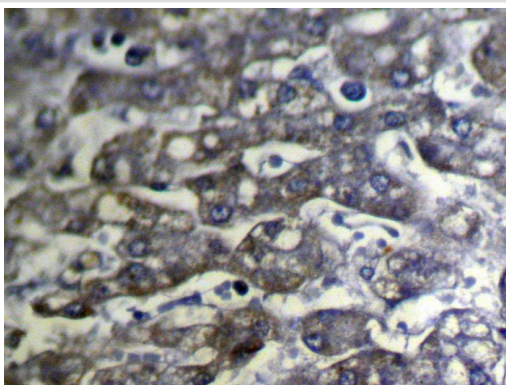
Description

Product Name	SLC25A2 Antibody
Host Species	Rabbit
Clonality	Polyclonal
Purification	Antigen affinity purification.
Applications	IHC
Species Reactivity	Hu
Specificity	The antibody detects endogenous levels of total SLC25A2 protein.
Immunogen Type	Protein
Immunogen Description	Fusion protein corresponding to residues near the N terminal of human solute carrier family 25 (mitochondrial carrier; ornithine transporter) member 2
Target Name	SLC25A2
Other Names	ORC2; ORNT2
Accession No.	Swiss-Prot:Q9BXI2Gene Accssion:BC100935
Uniprot	Q9BXI2
GeneID	83884;
Concentration	1.2mg/ml
Formulation	Rabbit IgG in pH7.4 PBS, 0.05% NaN ₃ , 40% Glycerol.
Storage	Store at -20°C

Application Details

Immunohistochemistry: 1:100-1:200

Images



Immunohistochemical analysis of paraffin-embedded Human Liver cancer tissue using #40109 at dilution 1/100.

Background

Located between the protocadherin beta and gamma gene clusters on chromosome 5, this intronless gene encodes a protein that is highly similar to an ornithine transporter localized in the mitochondrial inner membrane. The encoded protein most likely plays a role in metabolism as a mitochondrial

transport protein.?

Note: This product is for in vitro research use only