

## SNX27 Antibody

Catalog No: #40113

Orders: [order@signalwayantibody.com](mailto:order@signalwayantibody.com)Support: [tech@signalwayantibody.com](mailto:tech@signalwayantibody.com)

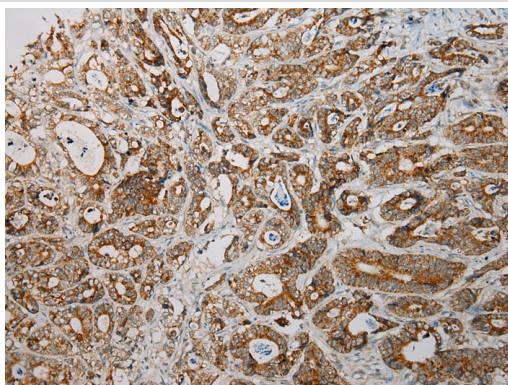
## Description

|                       |  |
|-----------------------|--|
| Product Name          | SNX27 Antibody   |
| Host Species          | Rabbit   |
| Clonality             | Polyclonal   |
| Purification          | Antigen affinity purification.   |
| Applications          | IHC  |
| Species Reactivity    | Hu   |
| Specificity           | The antibody detects endogenous levels of total SNX27 protein.                                       |
| Immunogen Type        | Protein  |
| Immunogen Description | Fusion protein corresponding to residues near the N terminal of human sorting nexin family member 27 |
| Target Name           | SNX27  |
| Other Names           | MRT1; MY014  |
| Accession No.         | Swiss-Prot:Q96L92Gene Accssion:BC012184  |
| Uniprot               | Q96L92   |
| GeneID                | 81609;   |
| Concentration         | 1.3mg/ml   |
| Formulation           | Rabbit IgG in pH7.4 PBS, 0.05% NaN <sub>3</sub> , 40% Glycerol.                                      |
| Storage               | Store at -20°C   |

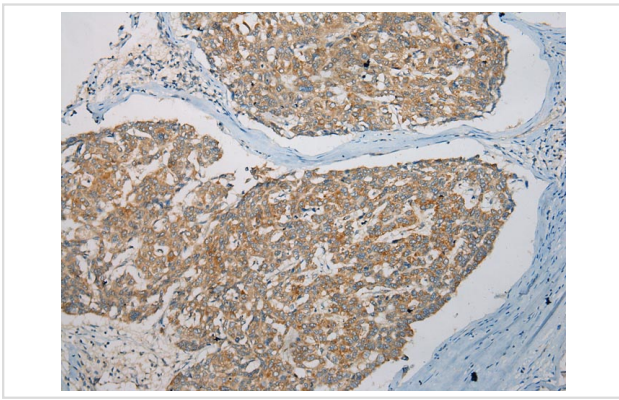
## Application Details

Immunohistochemistry: 1:100-1:200

## Images



Immunohistochemical analysis of paraffin-embedded Human Gastric cancer tissue using #40113 at dilution 1/100.



Immunohistochemical analysis of paraffin-embedded Human Liver cancer tissue using #40113 at dilution 1/100.

## Background

This gene encodes a member of the sorting nexin family, a diverse group of cytoplasmic and membrane-associated proteins involved in endocytosis of plasma membrane receptors and protein trafficking through these compartments. All members of this protein family contain a phosphoinositide binding domain (PX domain). A highly similar protein in mouse is responsible for the specific recruitment of an isoform of serotonin 5-hydroxytryptamine 4 receptor into early endosomes, suggesting the analogous role for the human protein.?

Note: This product is for in vitro research use only