

SRGAP3 Antibody

Catalog No: #40116

Orders: order@signalwayantibody.comSupport: tech@signalwayantibody.com

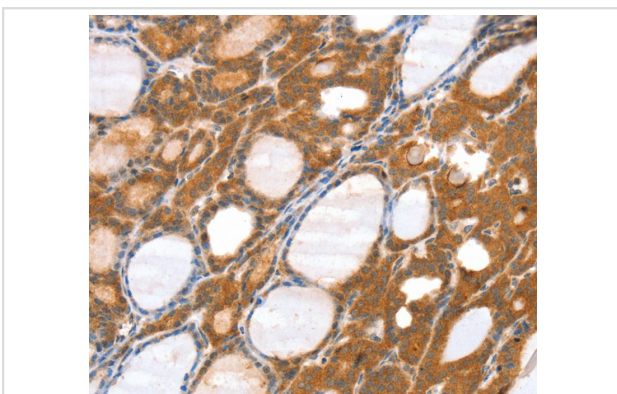
Description

Product Name	SRGAP3 Antibody
Host Species	Rabbit
Clonality	Polyclonal
Purification	Antigen affinity purification.
Applications	IHC
Species Reactivity	Hu
Specificity	The antibody detects endogenous levels of total SRGAP3 protein.
Immunogen Type	Protein
Immunogen Description	Fusion protein corresponding to residues near the N terminal of human SLIT-ROBO Rho GTPase activating protein 3
Target Name	SRGAP3
Other Names	WRP; MEGAP; SRGAP2; ARHGAP14
Accession No.	Swiss-Prot:O43295Gene Accssion:BC039300
Uniprot	O43295
GeneID	9901;
Concentration	2.2mg/ml
Formulation	Rabbit IgG in pH7.4 PBS, 0.05% NaN ₃ , 40% Glycerol.
Storage	Store at -20°C

Application Details

Immunohistochemistry:1:25-1:100

Images



Immunohistochemical analysis of paraffin-embedded Human thyroid cancer tissue using #40116 at dilution 1/40.

Background

SRGAP3 is a 1099 amino acid protein containing 1 FCH domain, 1 Rho-GAP domain and 1 SH3 domain. Expressed highly in brain, and in lower levels in kidney, WRP is thought to play a role in cell migration through its interaction with Cdc42 and Rac1. Cdc42 and Rac1 are two intracellular

signaling proteins that regulate the multistep cell migration process. WRP downregulates Cdc42 and Rac1 activity, thereby impairing actin and microtubule dynamics, the formation of protrusions, and total cell migration. Defects in the gene encoding WRP have been linked to severe idiopathic mental retardation. Three isoforms of WRP exist as a result of alternative splicing events.

Note: This product is for in vitro research use only