

SSX1 Antibody

Catalog No: #40118

Orders: order@signalwayantibody.comSupport: tech@signalwayantibody.com

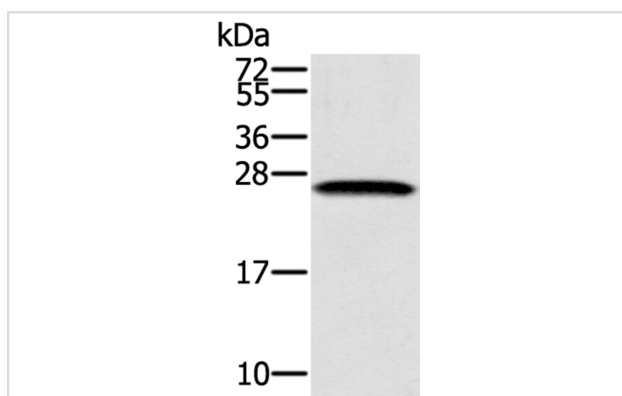
Description

Product Name	SSX1 Antibody
Host Species	Rabbit
Clonality	Polyclonal
Purification	Antigen affinity purification.
Applications	WB
Species Reactivity	Hu
Specificity	The antibody detects endogenous levels of total SSX1 protein.
Immunogen Type	Protein
Immunogen Description	Full length fusion protein
Target Name	SSX1
Other Names	SSRC; CT5.1
Accession No.	Swiss-Prot:Q16384?Gene Accssion:BC128611
Uniprot	Q16384
GeneID	6756;
SDS-PAGE MW	22KD
Concentration	1.9mg/ml
Formulation	Rabbit IgG in pH7.4 PBS, 0.05% NaN ₃ , 40% Glycerol.
Storage	Store at -20°C

Application Details

Western blotting: 1:500-1:2000

Images



Gel: 12%SDS-PAGE
 Lysate: 40ug K562 cell
 Primary antibody: 1/400 dilution
 Secondary antibody dilution: 1/8000
 Exposure time: 1 minute

Background

The product of this gene belongs to the family of highly homologous synovial sarcoma X (SSX) breakpoint proteins. These proteins may function as transcriptional repressors. They are also capable of eliciting spontaneous humoral and cellular immune responses in cancer patients, and are

potentially useful targets in cancer vaccine-based immunotherapy.?

Note: This product is for in vitro research use only