

SSX2IP Antibody

Catalog No: #40119

Orders: order@signalwayantibody.com

Support: tech@signalwayantibody.com

Description

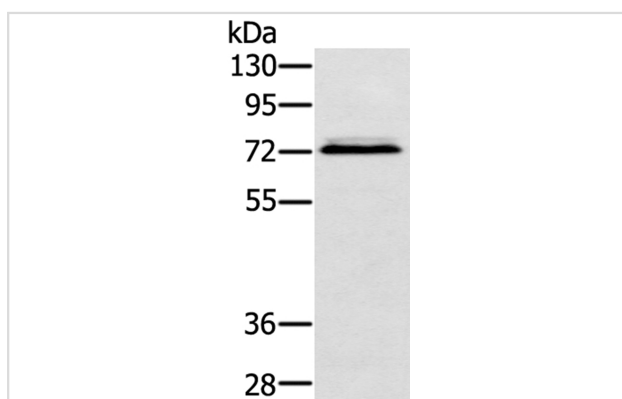
Product Name	SSX2IP Antibody
Host Species	Rabbit
Clonality	Polyclonal
Purification	Antigen affinity purification.
Applications	WB IHC
Species Reactivity	Hu
Specificity	The antibody detects endogenous levels of total SSX2IP protein.
Immunogen Type	Protein
Immunogen Description	Fusion protein corresponding to residues near the C terminal of human synovial sarcoma, X breakpoint 2 interacting protein
Target Name	SSX2IP
Other Names	ADIP
Accession No.	Swiss-Prot:Q9Y2D8Gene Accssion:BC033637
Uniprot	Q9Y2D8
GeneID	117178;
SDS-PAGE MW	71KD
Concentration	2.7mg/ml
Formulation	Rabbit IgG in pH7.4 PBS, 0.05% NaN ₃ , 40% Glycerol.
Storage	Store at -20°C

Application Details

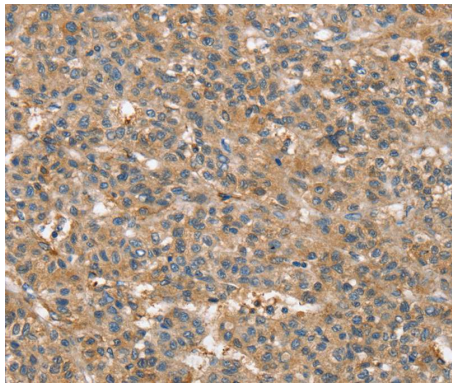
Western blotting: 1:500-1:2000

Immunohistochemistry:1:40-1:150

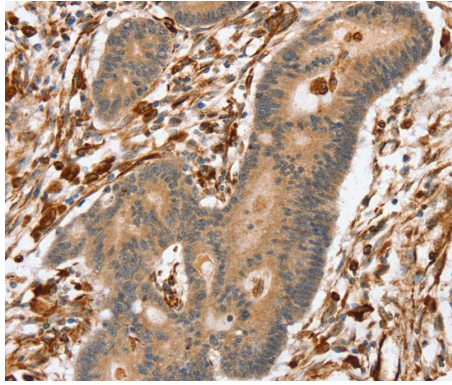
Images



Gel: 8%SDS-PAGE
 Lysate: 40ug Hepg2 cellPrimary antibody: 1/500 dilution
 Secondary antibody dilution: 1/8000
 Exposure time: 10 seconds



Immunohistochemical analysis of paraffin-embedded Human liver cancer tissue using #40119 at dilution 1/45.



Immunohistochemical analysis of paraffin-embedded Human colon cancer tissue using #40119 at dilution 1/20.

Background

This gene encodes a protein that binds the cancer-testis antigen Synovial Sarcoma X breakpoint 2 protein. The encoded protein may regulate the activity of Synovial Sarcoma X breakpoint 2 protein in malignant cells. Alternate splicing results in multiple transcript variants. A pseudogene of this gene is found on chromosome 3.?

Note: This product is for in vitro research use only