

STC1 Antibody

Catalog No: #40121

Orders: order@signalwayantibody.comSupport: tech@signalwayantibody.com

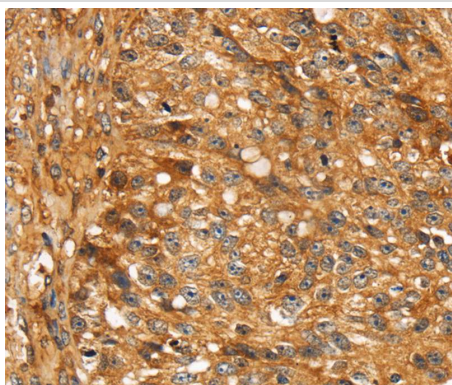
Description

Product Name	STC1 Antibody
Host Species	Rabbit
Clonality	Polyclonal
Purification	Antigen affinity purification.
Applications	IHC
Species Reactivity	Hu
Specificity	The antibody detects endogenous levels of total STC1 protein.
Immunogen Type	Protein
Immunogen Description	Full length fusion protein
Target Name	STC1
Other Names	STC
Accession No.	Swiss-Prot:P52823Gene Accssion:BC029044
Uniprot	P52823
GeneID	6781;
Concentration	1.2mg/ml
Formulation	Rabbit IgG in pH7.4 PBS, 0.05% NaN ₃ , 40% Glycerol.
Storage	Store at -20°C

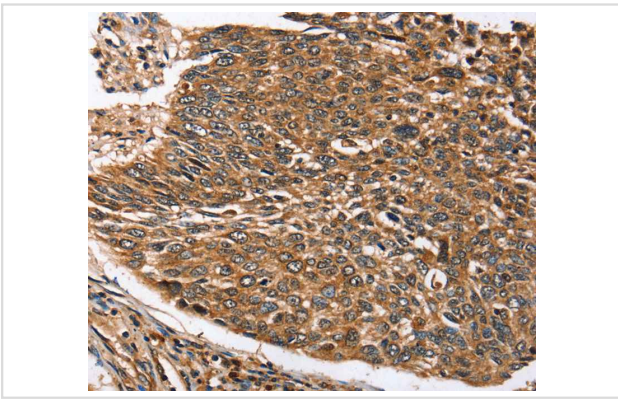
Application Details

Immunohistochemistry:1:25-1:100

Images



Immunohistochemical analysis of paraffin-embedded Human breast cancer tissue using #40121 at dilution 1/20.



Immunohistochemical analysis of paraffin-embedded Human lung cancer tissue using #40121 at dilution 1/20.

Background

This gene encodes a secreted, homodimeric glycoprotein that is expressed in a wide variety of tissues and may have autocrine or paracrine functions. The gene contains a 5' UTR rich in CAG trinucleotide repeats. The encoded protein contains 11 conserved cysteine residues and is phosphorylated by protein kinase C exclusively on its serine residues. The protein may play a role in the regulation of renal and intestinal calcium and phosphate transport, cell metabolism, or cellular calcium/phosphate homeostasis.?

Note: This product is for in vitro research use only