

SRPK3 Antibody

Catalog No: #40122

Orders: order@signalwayantibody.com

Support: tech@signalwayantibody.com

Description

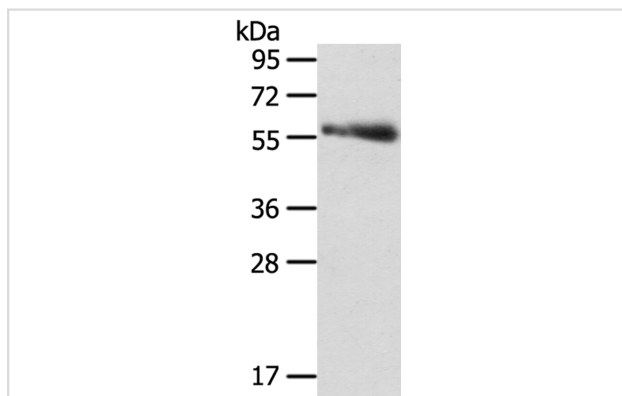
Product Name	SRPK3 Antibody
Host Species	Rabbit
Clonality	Polyclonal
Purification	Antigen affinity purification.
Applications	WB IHC
Species Reactivity	Hu
Specificity	The antibody detects endogenous levels of total SRPK3 protein.
Immunogen Type	Protein
Immunogen Description	Fusion protein corresponding to residues near the C terminal of human SRSF protein kinase 3
Target Name	SRPK3
Other Names	MSSK1; STK23; MSSK-1
Accession No.	Swiss-Prot:Q9UPE1 Gene Accssion:BC117124
Uniprot	Q9UPE1
GeneID	26576;
SDS-PAGE MW	62KD
Concentration	1.2mg/ml
Formulation	Rabbit IgG in pH7.4 PBS, 0.05% NaN ₃ , 40% Glycerol.
Storage	Store at -20°C

Application Details

Western blotting: 1:200-1:1000

Immunohistochemistry:1:25-1:100

Images

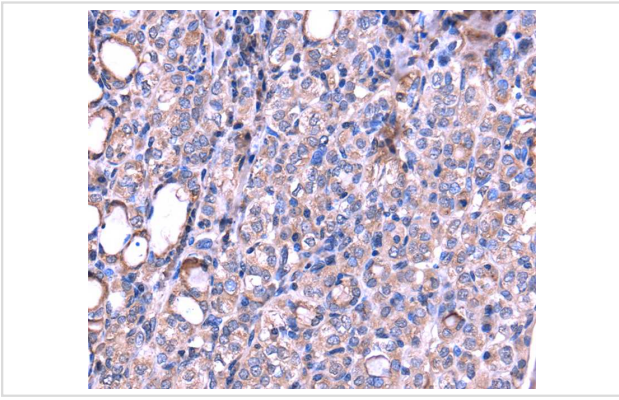


Gel: 8%SDS-PAGE

Lysate: 40ug Human thyroid cancer tissue
Primary antibody:
1/300 dilution

Secondary antibody dilution: 1/8000

Exposure time: 3 minutes



Immunohistochemical analysis of paraffin-embedded Human thyroid cancer tissue using #40122 at dilution 1/20.

Background

This gene encodes a protein kinase similar to a protein kinase which is specific for the SR (serine/arginine-rich domain) family of splicing factors. A highly similar protein has been shown to play a role in muscle development in mice. Multiple transcript variants encoding different isoforms have been found for this gene.?

Note: This product is for in vitro research use only