

SULT2B1 Antibody

Catalog No: #40124

Orders: order@signalwayantibody.comSupport: tech@signalwayantibody.com

Description

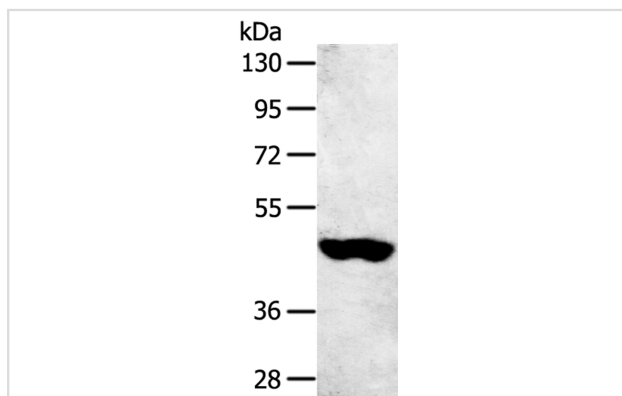
Product Name	SULT2B1 Antibody
Host Species	Rabbit
Clonality	Polyclonal
Purification	Antigen affinity purification.
Applications	WB IHC
Species Reactivity	Hu
Specificity	The antibody detects endogenous levels of total SULT2B1 protein.
Immunogen Type	Protein
Immunogen Description	Fusion protein corresponding to residues near the C terminal of human sulfotransferase family, cytosolic, 2B, member 1
Target Name	SULT2B1
Other Names	HSST2
Accession No.	Swiss-Prot:O00204Gene Accssion:BC034694
Uniprot	O00204
GeneID	6820;
SDS-PAGE MW	41KD
Concentration	1.5mg/ml
Formulation	Rabbit IgG in pH7.4 PBS, 0.05% NaN ₃ , 40% Glycerol.
Storage	Store at -20°C

Application Details

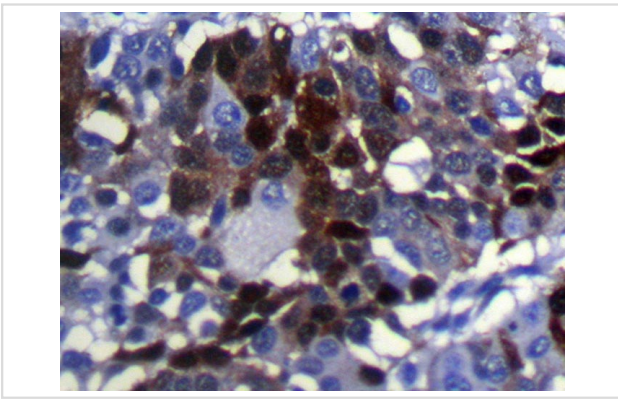
Western blotting: 1:500-1:2000

Immunohistochemistry: 1:100-1:200

Images



Gel: 8%SDS-PAGE
Lysate: 60ug 231 cell
Primary antibody: 1/800 dilution
Secondary antibody dilution: 1/8000
Exposure time: 5 minutes



Immunohistochemical analysis of paraffin-embedded Human Liver cancer tissue using #40124 at dilution 1/100.

Background

Sulfotransferase enzymes catalyze the sulfate conjugation of many hormones, neurotransmitters, drugs, and xenobiotic compounds. These cytosolic enzymes are different in their tissue distributions and substrate specificities. The gene structure (number and length of exons) is similar among family members. This gene sulfates dehydroepiandrosterone but not 4-nitrophenol, a typical substrate for the phenol and estrogen sulfotransferase subfamilies. Two alternatively spliced variants that encode different isoforms have been described.

Note: This product is for in vitro research use only