

STX8 Antibody

Catalog No: #40127

Orders: order@signalwayantibody.comSupport: tech@signalwayantibody.com

Description

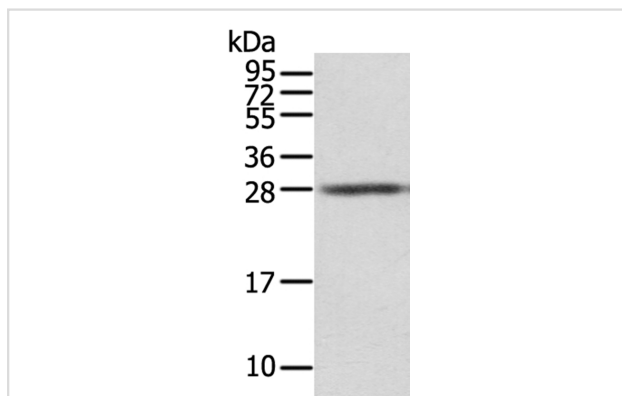
Product Name	STX8 Antibody
Host Species	Rabbit
Clonality	Polyclonal
Purification	Antigen affinity purification.
Applications	WB IHC
Species Reactivity	Hu
Specificity	The antibody detects endogenous levels of total STX8 protein.
Immunogen Type	Protein
Immunogen Description	Fusion protein corresponding to residues near the C terminal of human syntaxin 8
Target Name	STX8
Other Names	CARB
Accession No.	Swiss-Prot:Q9UNK0Gene Accssion:BC009713
Uniprot	Q9UNK0
GeneID	9482;
SDS-PAGE MW	27KD
Concentration	1.1mg/ml
Formulation	Rabbit IgG in pH7.4 PBS, 0.05% NaN ₃ , 40% Glycerol.
Storage	Store at -20°C

Application Details

Western blotting: 1:500-1:2000

Immunohistochemistry: 1:100-1:200

Images

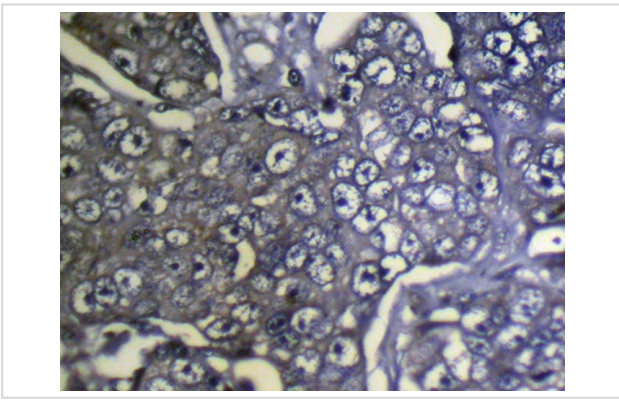


Gel: 12%SDS-PAGE

Lysate: 40ug Hela cellPrimary antibody: 1/500 dilution

Secondary antibody dilution: 1/8000

Exposure time: 5seconds



Immunohistochemical analysis of paraffin-embedded Human Breast tissue using #40127 at dilution 1/100,

Background

The gene is a member of the syntaxin family. The encoded protein is involved in protein trafficking from early to late endosomes via vesicle fusion and exocytosis. A related pseudogene has been identified on chromosome 12. Alternative splicing results in multiple transcript variants.

Note: This product is for in vitro research use only