

## STX16 Antibody

Catalog No: #40128

Orders: [order@signalwayantibody.com](mailto:order@signalwayantibody.com)Support: [tech@signalwayantibody.com](mailto:tech@signalwayantibody.com)

## Description

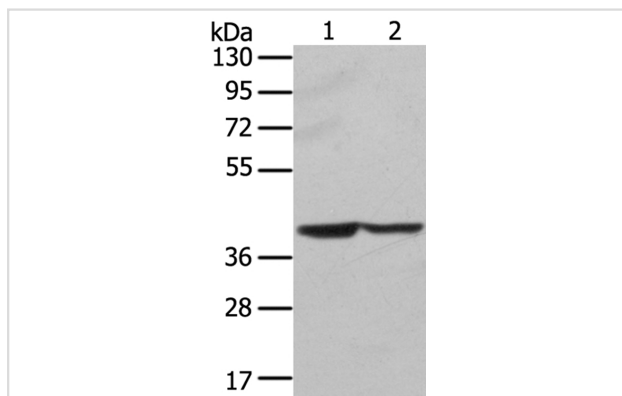
Product Name	STX16 Antibody
Host Species	Rabbit
Clonality	Polyclonal
Purification	Antigen affinity purification.
Applications	WB IHC
Species Reactivity	Hu
Specificity	The antibody detects endogenous levels of total STX16 protein.
Immunogen Type	Protein
Immunogen Description	Full length fusion protein
Target Name	STX16
Other Names	SYN16
Accession No.	Swiss-Prot:O14662Gene Accssion:BC073876
Uniprot	O14662
GeneID	8675;
SDS-PAGE MW	37KD
Concentration	1.6mg/ml
Formulation	Rabbit IgG in pH7.4 PBS, 0.05% NaN <sub>3</sub> , 40% Glycerol.
Storage	Store at -20°C

## Application Details

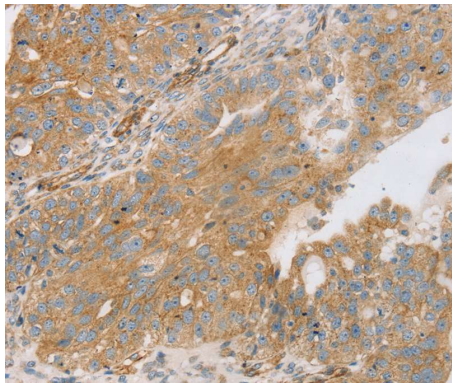
Western blotting: 1:500-1:2000

Immunohistochemistry:1:25-1:100

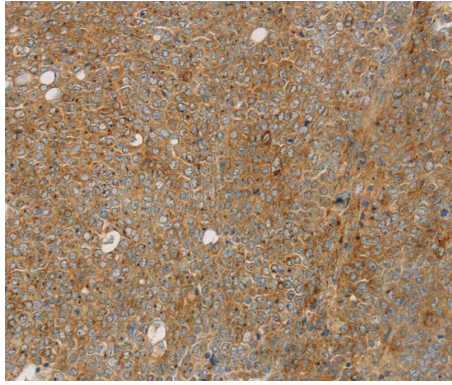
## Images



Gel: 8%SDS-PAGE  
 Lysates (from left to right): HeLa and hepg2 cell  
 Amount of lysate: 40ug per lane  
 Primary antibody: 1/400 dilution  
 Secondary antibody dilution: 1/8000  
 Exposure time: 5 seconds



Immunohistochemical analysis of paraffin-embedded Human breast cancer tissue using #40128 at dilution 1/30.



Immunohistochemical analysis of paraffin-embedded Human ovarian cancer tissue using #40128 at dilution 1/30.

## Background

This gene encodes a protein that is a member of the syntaxin or t-SNARE (target-SNAP receptor) family. These proteins are found on cell membranes and serve as the targets for V-SNARES (vesicle-SNAP receptors) permitting specific synaptic vesicle docking and fusion. A microdeletion in the region of chromosome 20 where this gene is located has been associated with pseudohypoparathyroidism type Ib.?

Note: This product is for in vitro research use only