

## STX10 Antibody

Catalog No: #40131

Orders: [order@signalwayantibody.com](mailto:order@signalwayantibody.com)Support: [tech@signalwayantibody.com](mailto:tech@signalwayantibody.com)

## Description

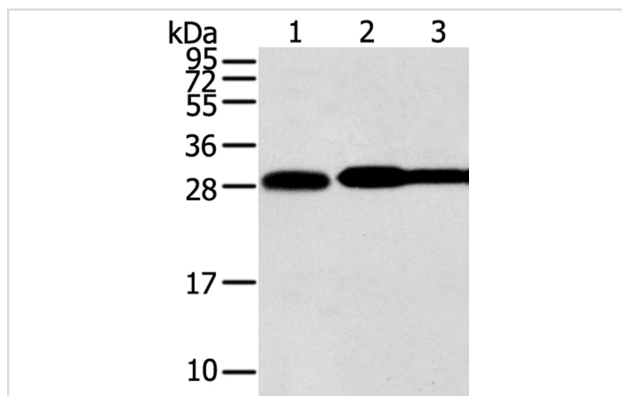
Product Name	STX10 Antibody
Host Species	Rabbit
Clonality	Polyclonal
Purification	Antigen affinity purification.
Applications	WB IHC
Species Reactivity	Hu
Specificity	The antibody detects endogenous levels of total STX10 protein.
Immunogen Type	Protein
Immunogen Description	Fusion protein corresponding to a region derived from internal residues of human syntaxin 10
Target Name	STX10
Other Names	SYN10; hsyn10
Accession No.	Swiss-Prot:O60499Gene Accssion:BC017237
Uniprot	O60499
GeneID	8677;
SDS-PAGE MW	28KD
Concentration	1.6mg/ml
Formulation	Rabbit IgG in pH7.4 PBS, 0.05% NaN <sub>3</sub> , 40% Glycerol.
Storage	Store at -20°C

## Application Details

Western blotting: 1:1000-1:5000

Immunohistochemistry: 1:100-1:200

## Images



Gel: 12%SDS-PAGE

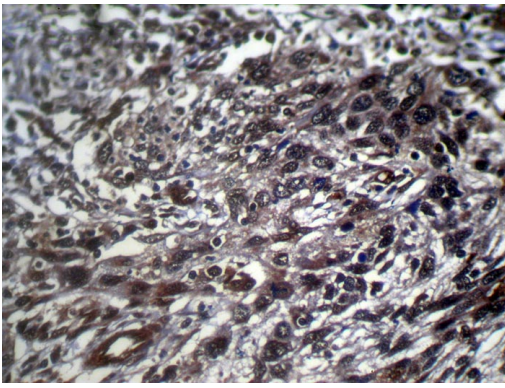
Lysates (from left to right): HeLa, Iovo and A431 cell

Amount of lysate: 40ug per lane

Primary antibody: 1/800 dilution

Secondary antibody dilution: 1/8000

Exposure time: 5 seconds



Immunohistochemical analysis of paraffin-embedded Human Esophagus cancer tissue using #40131 at dilution 1/100.

## Background

This gene belongs to the syntaxin family and encodes a soluble N-ethylmaleimide sensitive factor attachment protein receptor (SNARE). The encoded protein is involved in docking and fusion events at the Golgi apparatus. Alternative splicing results in multiple transcript variants.?

Note: This product is for in vitro research use only