

TBC1D22A Antibody

Catalog No: #40135

Orders: order@signalwayantibody.comSupport: tech@signalwayantibody.com

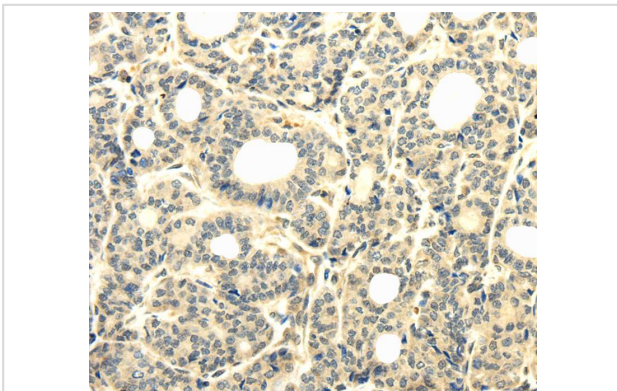
Description

Product Name	TBC1D22A Antibody
Host Species	Rabbit
Clonality	Polyclonal
Purification	Antigen affinity purification.
Applications	IHC
Species Reactivity	Hu
Specificity	The antibody detects endogenous levels of total TBC1D22A protein.
Immunogen Type	Protein
Immunogen Description	Fusion protein of human TBC1 domain family, member 22A
Target Name	TBC1D22A
Other Names	C22orf4; HSC79E021
Accession No.	Swiss-Prot:Q8WUA7Gene Accssion:BC002743
Uniprot	Q8WUA7
GeneID	25771;
Concentration	1.4mg/ml
Formulation	Rabbit IgG in pH7.4 PBS, 0.05% NaN ₃ , 40% Glycerol.
Storage	Store at -20°C

Application Details

Immunohistochemistry:1:25-1:100

Images



Immunohistochemical analysis of paraffin-embedded Human thyroid cancer tissue using #40135 at dilution 1/25.

Background

TBC1D22A (TBC1 domain family, member 22A), also known as C22orf4, is a 517 amino acid protein that contains one Rab-GAP TBC domain and is thought to function as a GTPase-activating protein for Rab family members. Multiple isoforms of TBC1D22A exist due to alternative splicing events. The gene encoding TBC1D22A maps to human chromosome 22, which houses over 500 genes and is the second smallest human chromosome. Mutations in several of the genes that map to chromosome 22 are involved in the development of Phelan-McDermid syndrome, neurofibromatosis type

2, autism and schizophrenia. Additionally, translocations between chromosomes 9 and 22 may lead to the formation of the Philadelphia chromosome and the subsequent production of the novel fusion protein BCR-Abl, a potent cell proliferation activator found in several types of leukemias.

Note: This product is for in vitro research use only