

## THAP2 Antibody

Catalog No: #40141

Orders: [order@signalwayantibody.com](mailto:order@signalwayantibody.com)Support: [tech@signalwayantibody.com](mailto:tech@signalwayantibody.com)

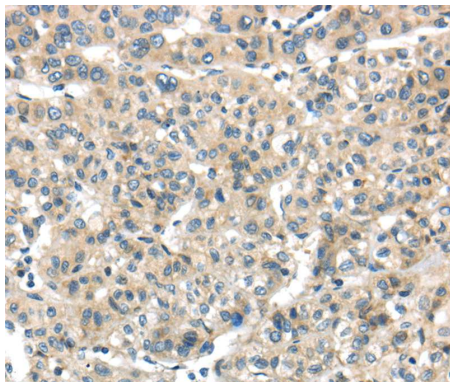
## Description

Product Name	THAP2 Antibody
Host Species	Rabbit
Clonality	Polyclonal
Purification	Antigen affinity purification.
Applications	IHC
Species Reactivity	Hu
Specificity	The antibody detects endogenous levels of total THAP2 protein.
Immunogen Type	Protein
Immunogen Description	Full length fusion protein
Target Name	THAP2
Accession No.	Swiss-Prot:Q9H0W7Gene Accssion:BC008358
Uniprot	Q9H0W7
GeneID	83591;
Concentration	0.8mg/ml
Formulation	Rabbit IgG in pH7.4 PBS, 0.05% NaN <sub>3</sub> , 40% Glycerol.
Storage	Store at -20°C

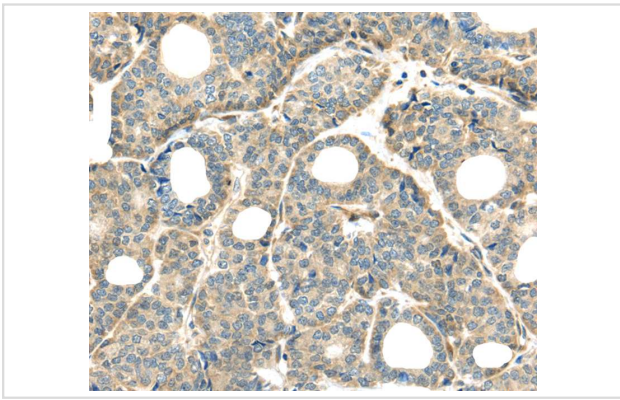
## Application Details

Immunohistochemistry:1:25-1:100

## Images



Immunohistochemical analysis of paraffin-embedded Human liver cancer tissue using #40141 at dilution 1/20.



Immunohistochemical analysis of paraffin-embedded Human thyroid cancer tissue using #40141 at dilution 1/20.

## Background

THAP2, also named as THAP domain-containing protein 2, is a 228 amino acid protein, which contains one THAP-type zinc finger. Members of the THAP (thanatos-associated protein) family of proteins contain a well conserved DNA-binding domain known as the THAP-type zinc finger motif. Proteins containing the THAP-type zinc finger motif are commonly involved in transcriptional regulation, cell-cycle control, apoptosis and chromatin modification

Note: This product is for in vitro research use only