

TRIM14 Antibody

Catalog No: #40149

Orders: order@signalwayantibody.comSupport: tech@signalwayantibody.com

Description

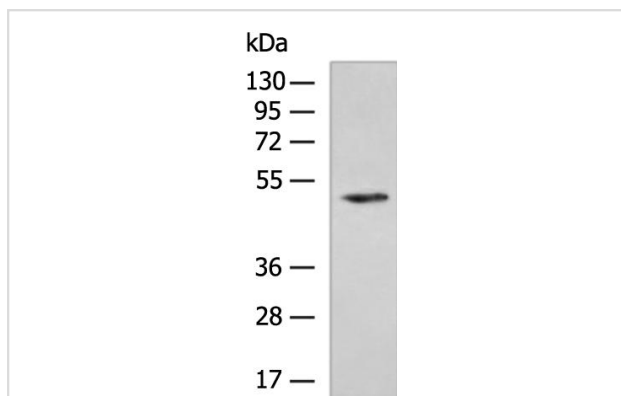
Product Name	TRIM14 Antibody
Host Species	Rabbit
Clonality	Polyclonal
Purification	Antigen affinity purification.
Applications	WB IHC
Species Reactivity	Hu
Specificity	The antibody detects endogenous levels of total TRIM14 protein.
Immunogen Type	Protein
Immunogen Description	Fusion protein of human TRIM14
Target Name	TRIM14
Accession No.	Swiss-Prot:Q14142Gene Accssion:BC006333
Uniprot	Q14142
GeneID	9830;
SDS-PAGE MW	50KD
Concentration	0.8 mg/ml
Formulation	Rabbit IgG in pH7.4 PBS, 0.05% NaN ₃ , 40% Glycerol.
Storage	Store at -20°C

Application Details

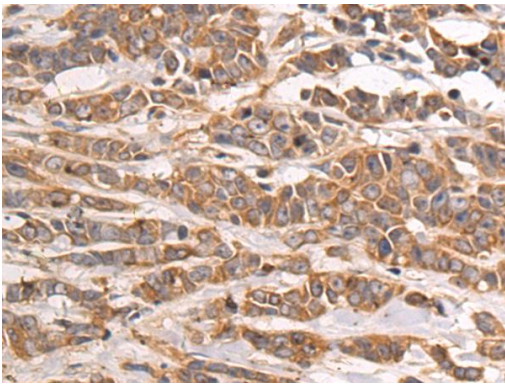
Western blotting: 1:500-1:2000

Immunohistochemistry:1:30-1:150

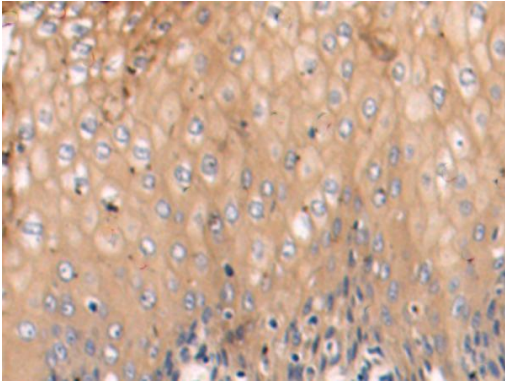
Images



Gel: 8%SDS-PAGE
Lysate: 40 ug
Lane: Jurkat cell lysate
Primary antibody: (TRIM14 Antibody) at dilution 1/400
Secondary antibody: Goat anti rabbit IgG at 1/5000
dilution
Exposure time: 40 seconds



The image is immunohistochemistry of paraffin-embedded Human breast cancer tissue using (TRIM14 Antibody) at dilution 1/60



The image is immunohistochemistry of paraffin-embedded Human esophagus cancer tissue using (TRIM14 Antibody) at dilution 1/60

Background

The protein encoded by this gene is a member of the tripartite motif (TRIM) family. The TRIM motif includes three zinc-binding domains, a RING, a B-box type 1 and a B-box type 2, and a coiled-coil region. The protein localizes to cytoplasmic bodies and its function has not been determined. Alternative splicing results in multiple transcript variants.?

Note: This product is for in vitro research use only