

TRIM10 Antibody

Catalog No: #40150

Orders: order@signalwayantibody.comSupport: tech@signalwayantibody.com

Description

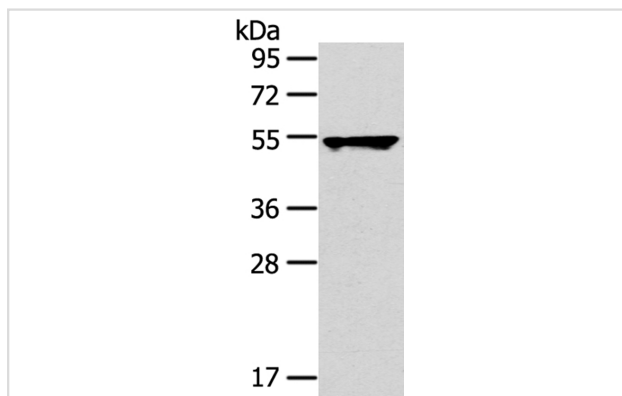
Product Name	TRIM10 Antibody
Host Species	Rabbit
Clonality	Polyclonal
Purification	Antigen affinity purification.
Applications	WB IHC
Species Reactivity	Hu
Specificity	The antibody detects endogenous levels of total TRIM10 protein.
Immunogen Type	Protein
Immunogen Description	Fusion protein corresponding to residues near the C terminal of human tripartite motif containing 10
Target Name	TRIM10
Other Names	RNF9; HERF1; RFB30
Accession No.	Swiss-Prot:Q9UDY6Gene Accssion:BC113419
Uniprot	Q9UDY6
GeneID	10107;
SDS-PAGE MW	55KD
Concentration	2.1mg/ml
Formulation	Rabbit IgG in pH7.4 PBS, 0.05% NaN ₃ , 40% Glycerol.
Storage	Store at -20°C

Application Details

Western blotting: 1:1000-1:5000

Immunohistochemistry:1:25-1:100

Images

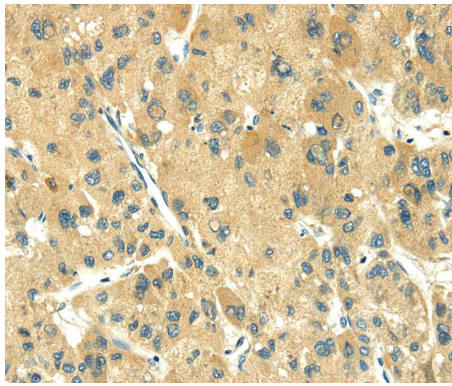


Gel: 8%SDS-PAGE

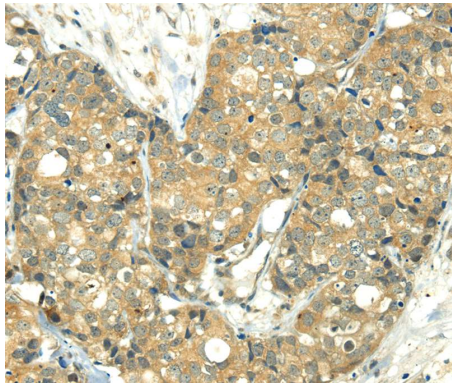
Lysate: 40ug Hela cellPrimary antibody: 1/800 dilution

Secondary antibody dilution: 1/8000

Exposure time: 30 seconds



Immunohistochemical analysis of paraffin-embedded Human liver cancer tissue using #40150 at dilution 1/35.



Immunohistochemical analysis of paraffin-embedded Human breast cancer tissue using #40150 at dilution 1/35.

Background

The protein encoded by this gene is a member of the tripartite motif (TRIM) family. The TRIM motif includes three zinc-binding domains, a RING, a B-box type 1 and a B-box type 2, and a coiled-coil region. This protein localizes to cytoplasmic bodies. Studies in mice suggest that this protein plays a role in terminal differentiation of erythroid cells.

Note: This product is for in vitro research use only