

## TMPRSS4 Antibody

Catalog No: #40158

Orders: order@signalwayantibody.com

Support: tech@signalwayantibody.com

## Description

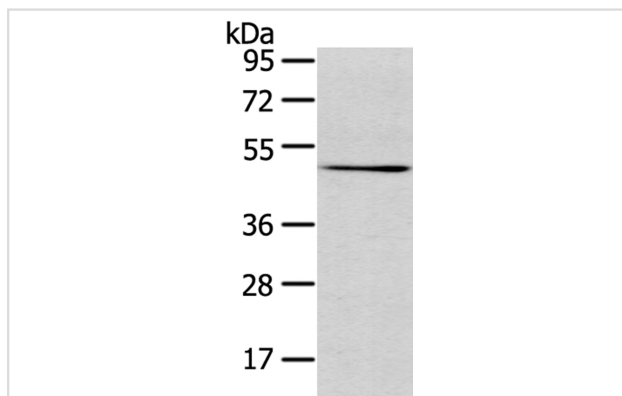
Product Name	TMPRSS4 Antibody
Host Species	Rabbit
Clonality	Polyclonal
Purification	Antigen affinity purification.
Applications	WB IHC
Species Reactivity	Hu
Specificity	The antibody detects endogenous levels of total TMPRSS4 protein.
Immunogen Type	Protein
Immunogen Description	Fusion protein of human transmembrane protease, serine 4
Target Name	TMPRSS4
Other Names	CAPH2; MT-SP2; TMPRSS3
Accession No.	Swiss-Prot:Q9NRS4Gene Accssion:BC011703
Uniprot	Q9NRS4
GeneID	56649;
SDS-PAGE MW	48KD
Concentration	2.4mg/ml
Formulation	Rabbit IgG in pH7.4 PBS, 0.05% NaN <sub>3</sub> , 40% Glycerol.
Storage	Store at -20°C

## Application Details

Western blotting: 1:200-1:1000

Immunohistochemistry:1:30-1:150

## Images

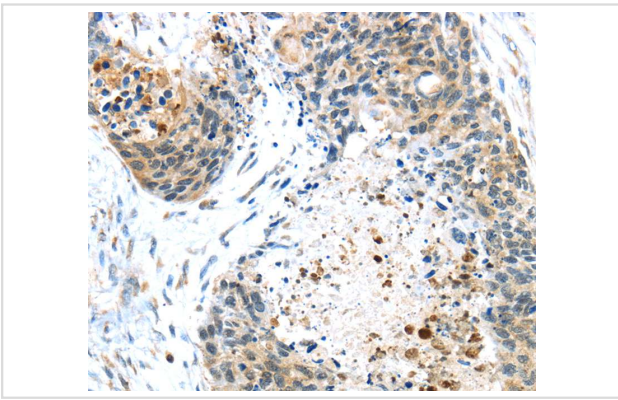


Gel: 8%SDS-PAGE

Lysate: 40ug A431 cellPrimary antibody: 1/500 dilution

Secondary antibody dilution: 1/8000

Exposure time: 3 minutes



Immunohistochemical analysis of paraffin-embedded Human esophagus cancer tissue using #40158 at dilution 1/45.

## Background

This gene encodes a member of the serine protease family. Serine proteases are known to be involved in a variety of biological processes, whose malfunction often leads to human diseases and disorders. This gene was identified as a gene overexpressed in pancreatic carcinoma. The encoded protein is membrane bound with a N-terminal anchor sequence and a glycosylated extracellular region containing the serine protease domain. Multiple transcript variants encoding different isoforms have been found for this gene.?

Note: This product is for in vitro research use only