

TMPRSS11A Antibody

Catalog No: #40161

Orders: order@signalwayantibody.comSupport: tech@signalwayantibody.com

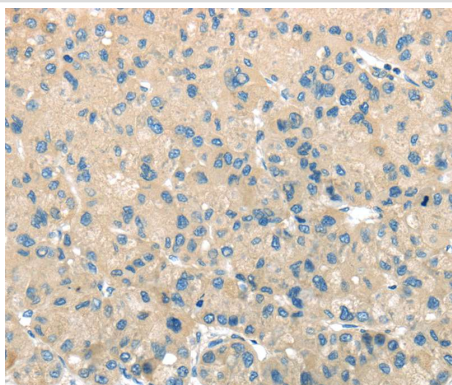
Description

Product Name	TMPRSS11A Antibody
Host Species	Rabbit
Clonality	Polyclonal
Purification	Antigen affinity purification.
Applications	IHC
Species Reactivity	Hu
Specificity	The antibody detects endogenous levels of total TMPRSS11A protein.
Immunogen Type	Protein
Immunogen Description	Fusion protein corresponding to a region derived from internal residues of human transmembrane protease, serine 11A
Target Name	TMPRSS11A
Other Names	ECRG1
Accession No.	Swiss-Prot:Q6ZMR5Gene Accssion:BC111796
Uniprot	Q6ZMR5
GeneID	339967;
Concentration	1.8mg/ml
Formulation	Rabbit IgG in pH7.4 PBS, 0.05% NaN ₃ , 40% Glycerol.
Storage	Store at -20°C

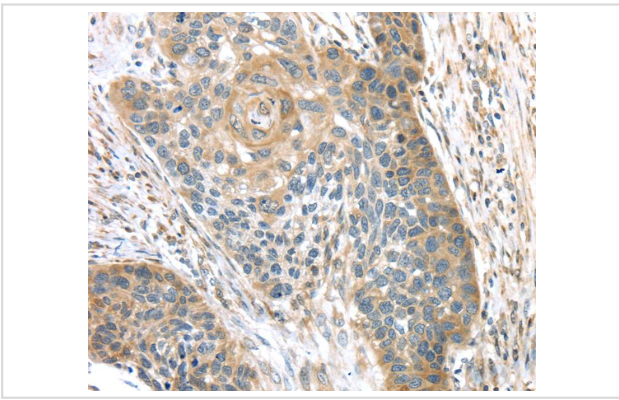
Application Details

Immunohistochemistry:1:25-1:100

Images



Immunohistochemical analysis of paraffin-embedded Human liver cancer tissue using #40161 at dilution 1/30.



Immunohistochemical analysis of paraffin-embedded Human esophagus cancer tissue using #40161 at dilution 1/30.

Background

Probable serine protease which may play a role in cellular senescence. Overexpression inhibits cell growth and induce G1 cell cycle arrest.

Note: This product is for in vitro research use only