

## UGP2 Antibody

Catalog No: #40177

Orders: [order@signalwayantibody.com](mailto:order@signalwayantibody.com)Support: [tech@signalwayantibody.com](mailto:tech@signalwayantibody.com)

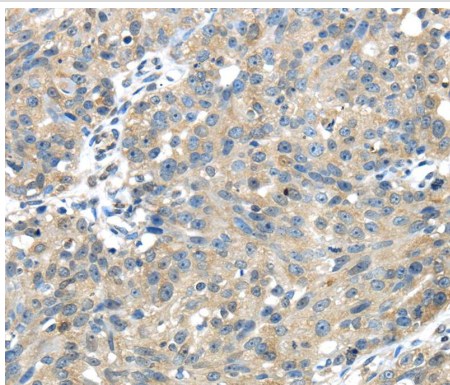
## Description

Product Name	UGP2 Antibody
Host Species	Rabbit
Clonality	Polyclonal
Purification	Antigen affinity purification.
Applications	IHC
Species Reactivity	Hu
Specificity	The antibody detects endogenous levels of total UGP2 protein.
Immunogen Type	Protein
Immunogen Description	Fusion protein of human UDP-glucose pyrophosphorylase 2
Target Name	UGP2
Other Names	UDPG; UGP1; UDPGP; UGPP1; UGPP2; UDPGP2; pHC379
Accession No.	Swiss-Prot:Q16851 Gene Accssion:BC002954
Uniprot	Q16851
GeneID	7360;
Concentration	2mg/ml
Formulation	Rabbit IgG in pH7.4 PBS, 0.05% NaN <sub>3</sub> , 40% Glycerol.
Storage	Store at -20°C

## Application Details

Immunohistochemistry:1:25-1:100

## Images



Immunohistochemical analysis of paraffin-embedded Human breast cancer tissue using #40177 at dilution 1/35.

## Background

The enzyme encoded by this gene is an important intermediary in mammalian carbohydrate interconversions. It transfers a glucose moiety from glucose-1-phosphate to MgUTP and forms UDP-glucose and MgPPi. In liver and muscle tissue, UDP-glucose is a direct precursor of glycogen; in lactating mammary gland it is converted to UDP-galactose which is then converted to lactose. The eukaryotic enzyme has no significant sequence similarity to the prokaryotic enzyme. Two transcript variants encoding different isoforms have been found for this gene.

---

Note: This product is for in vitro research use only