

IGFBP3 Antibody

Catalog No: #40184

Orders: order@signalwayantibody.comSupport: tech@signalwayantibody.com

Description

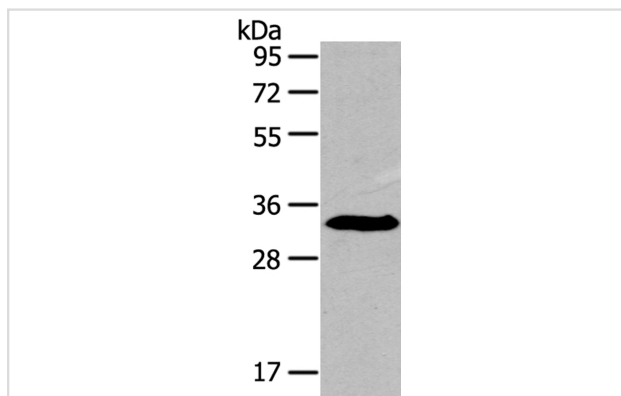
Product Name	IGFBP3 Antibody
Host Species	Rabbit
Clonality	Polyclonal
Purification	Antigen affinity purification.
Applications	WB IHC
Species Reactivity	Hu Ms
Specificity	The antibody detects endogenous levels of total IGFBP3 protein.
Immunogen Type	Peptide
Immunogen Description	Synthetic peptide of human insulin-like growth factor binding protein 3
Target Name	IGFBP3
Other Names	IBP3; BP-53
Accession No.	Swiss-Prot:P17936Gene Accssion:NP_000589
Uniprot	P17936
GeneID	3486;
SDS-PAGE MW	32KD
Concentration	2.7mg/ml
Formulation	Rabbit IgG in pH7.4 PBS, 0.05% NaN ₃ , 40% Glycerol.
Storage	Store at -20°C

Application Details

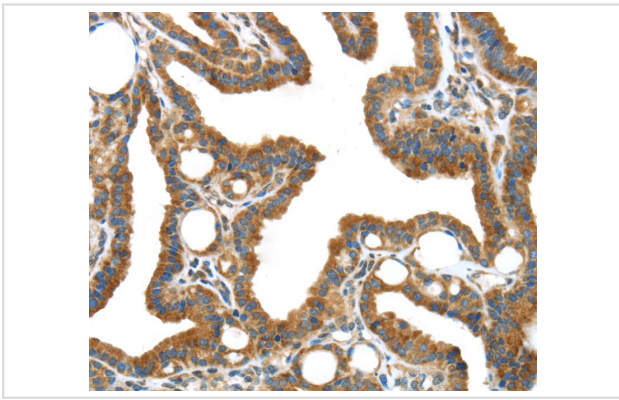
Western blotting: 1:500-1:2000

Immunohistochemistry:1:25-1:100

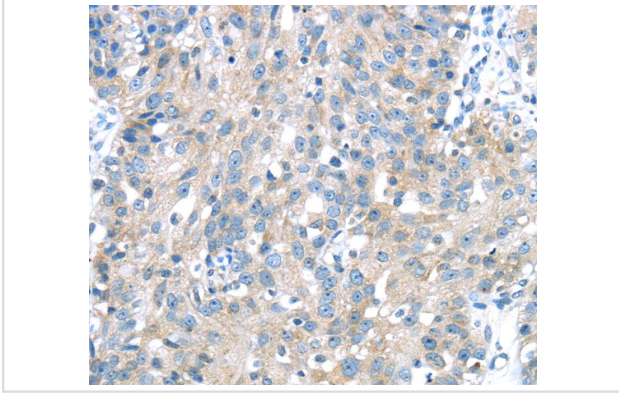
Images



Gel: 8%SDS-PAGE
Lysate: 40ug NIH/3T3 cellPrimary antibody: 1/300 dilution
Secondary antibody dilution: 1/8000
Exposure time: 1 minute



Immunohistochemical analysis of paraffin-embedded Human thyroid cancer tissue using #40184 at dilution 1/40.



Immunohistochemical analysis of paraffin-embedded Human breast cancer tissue using #40184 at dilution 1/40.

Background

This gene is a member of the insulin-like growth factor binding protein (IGFBP) family and encodes a protein with an IGFBP domain and a thyroglobulin type-I domain. The protein forms a ternary complex with insulin-like growth factor acid-labile subunit (IGFALS) and either insulin-like growth factor (IGF) I or II. In this form, it circulates in the plasma, prolonging the half-life of IGFs and altering their interaction with cell surface receptors.?

Note: This product is for in vitro research use only