

IL3RA Antibody

Catalog No: #40185

Orders: order@signalwayantibody.comSupport: tech@signalwayantibody.com

Description

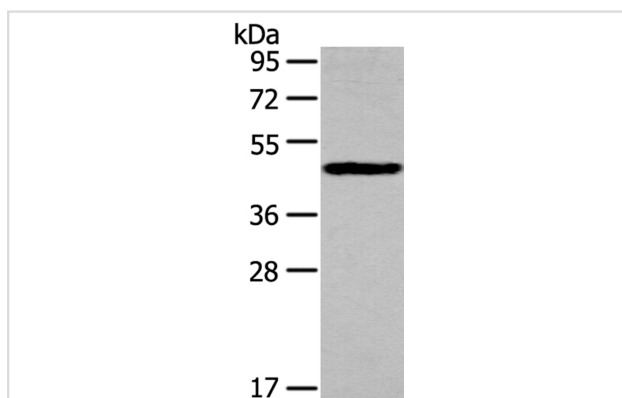
Product Name	IL3RA Antibody
Host Species	Rabbit
Clonality	Polyclonal
Purification	Antigen affinity purification.
Applications	WB IHC
Species Reactivity	Hu Ms
Specificity	The antibody detects endogenous levels of total IL3RA protein.
Immunogen Type	Peptide
Immunogen Description	Synthetic peptide of human interleukin 3 receptor, alpha (low affinity)
Target Name	IL3RA
Other Names	IL3R; CD123; IL3RX; IL3RY; IL3RAY; hIL-3Ra
Accession No.	Swiss-Prot:P26951 Gene Accssion:NP_002174
Uniprot	P26951
GeneID	3563;
SDS-PAGE MW	43KD
Concentration	2.4mg/ml
Formulation	Rabbit IgG in pH7.4 PBS, 0.05% NaN ₃ , 40% Glycerol.
Storage	Store at -20°C

Application Details

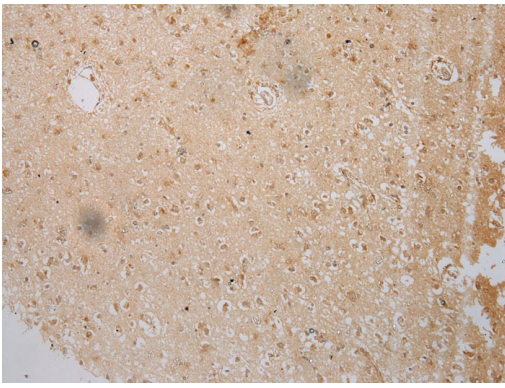
Western blotting: 1:500-1:2000

Immunohistochemistry: 1:100-1:200

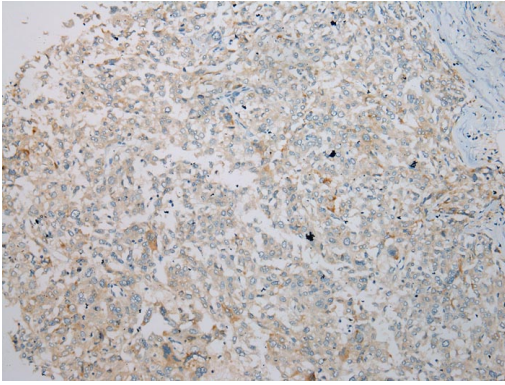
Images



Gel: 8%SDS-PAGE
Lysate: 40ug RAW264.7 cell
Primary antibody: 1/200 dilution
Secondary antibody dilution: 1/8000
Exposure time: 30 seconds



Immunohistochemical analysis of paraffin-embedded Human Brain cancer tissue using #40185 at dilution 1/200.



Immunohistochemical analysis of paraffin-embedded Human Liver cancer tissue using #40185 at dilution 1/200.

Background

The protein encoded by this gene is an interleukin 3 specific subunit of a heterodimeric cytokine receptor. The receptor is comprised of a ligand specific alpha subunit and a signal transducing beta subunit shared by the receptors for interleukin 3 (IL3), colony stimulating factor 2 (CSF2/GM-CSF), and interleukin 5 (IL5). The binding of this protein to IL3 depends on the beta subunit. The beta subunit is activated by the ligand binding, and is required for the biological activities of IL3.?

Note: This product is for in vitro research use only