

## IQGAP2 Antibody

Catalog No: #40187

Orders: [order@signalwayantibody.com](mailto:order@signalwayantibody.com)Support: [tech@signalwayantibody.com](mailto:tech@signalwayantibody.com)

## Description

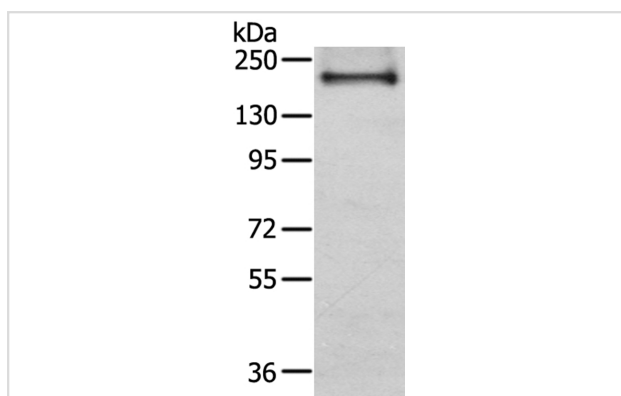
Product Name	IQGAP2 Antibody
Host Species	Rabbit
Clonality	Polyclonal
Purification	Antigen affinity purification.
Applications	WB IHC
Species Reactivity	Hu
Specificity	The antibody detects endogenous levels of total IQGAP2 protein.
Immunogen Type	Peptide
Immunogen Description	Synthetic peptide of human IQ motif containing GTPase activating protein 2
Target Name	IQGAP2
Accession No.	Swiss-Prot:Q13576Gene Accssion:NP_006624
Uniprot	Q13576
GeneID	10788;
SDS-PAGE MW	181KD
Concentration	2.8mg/ml
Formulation	Rabbit IgG in pH7.4 PBS, 0.05% NaN <sub>3</sub> , 40% Glycerol.
Storage	Store at -20°C

## Application Details

Western blotting: 1:200-1:1000

Immunohistochemistry:1:30-1:150

## Images

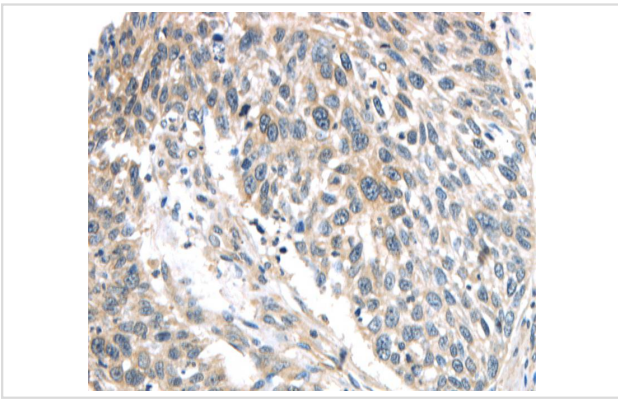


Gel: 6%SDS-PAGE

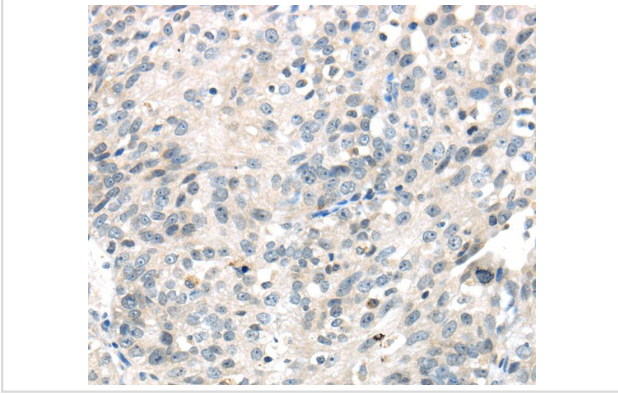
Lysate: 40ug Human fetal liver tissuePrimary antibody: 1/350 dilution

Secondary antibody dilution: 1/8000

Exposure time: 20 seconds



Immunohistochemical analysis of paraffin-embedded Human lung cancer tissue using #40187 at dilution 1/40.



Immunohistochemical analysis of paraffin-embedded Human ovarian cancer tissue using #40187 at dilution 1/40.

## Background

This gene encodes a member of the IQGAP family. The protein contains three IQ domains, one calponin homology domain, one Ras-GAP domain and one WW domain. It interacts with components of the cytoskeleton, with cell adhesion molecules, and with several signaling molecules to regulate cell morphology and motility.?

Note: This product is for in vitro research use only