

## GRIN2A Antibody

Catalog No: #40188

Orders: [order@signalwayantibody.com](mailto:order@signalwayantibody.com)Support: [tech@signalwayantibody.com](mailto:tech@signalwayantibody.com)

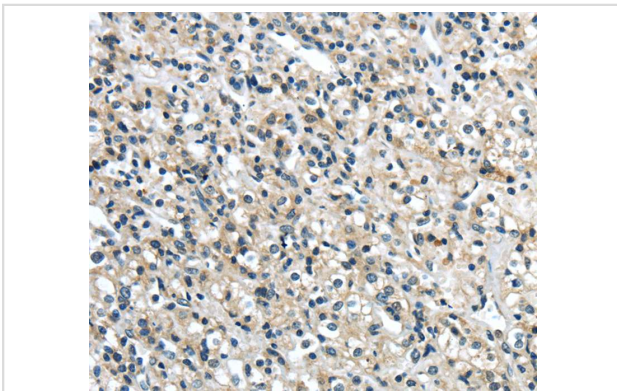
## Description

Product Name	GRIN2A Antibody
Host Species	Rabbit
Clonality	Polyclonal
Purification	Antigen affinity purification.
Applications	IHC
Species Reactivity	Hu
Specificity	The antibody detects endogenous levels of total GRIN2A protein.
Immunogen Type	Peptide
Immunogen Description	Synthetic peptide of human glutamate receptor, ionotropic, N-methyl D-aspartate 2A
Target Name	GRIN2A
Other Names	LKS; EPND; FESD; NR2A; GluN2A; NMDAR2A
Accession No.	Swiss-Prot:Q12879Gene Accssion:NP_000824
Uniprot	Q12879
GeneID	2903;
Concentration	2.2mg/ml
Formulation	Rabbit IgG in pH7.4 PBS, 0.05% NaN <sub>3</sub> , 40% Glycerol.
Storage	Store at -20°C

## Application Details

Immunohistochemistry:1:25-1:100

## Images



Immunohistochemical analysis of paraffin-embedded Human prostate cancer tissue using #40188 at dilution 1/35.

## Background

This gene encodes a member of the glutamate-gated ion channel protein family. The encoded protein is an N-methyl-D-aspartate (NMDA) receptor subunit. NMDA receptors are both ligand-gated and voltage-dependent, and are involved in long-term potentiation, an activity-dependent increase in the efficiency of synaptic transmission thought to underlie certain kinds of memory and learning. These receptors are permeable to calcium ions, and activation results in a calcium influx into post-synaptic cells, which results in the activation of several signaling cascades. Disruption of this gene is

associated with focal epilepsy and speech disorder with or without mental retardation. Alternative splicing results in multiple transcript variants.

---

Note: This product is for in vitro research use only