

AHI1 Antibody

Catalog No: #40189

Orders: order@signalwayantibody.comSupport: tech@signalwayantibody.com

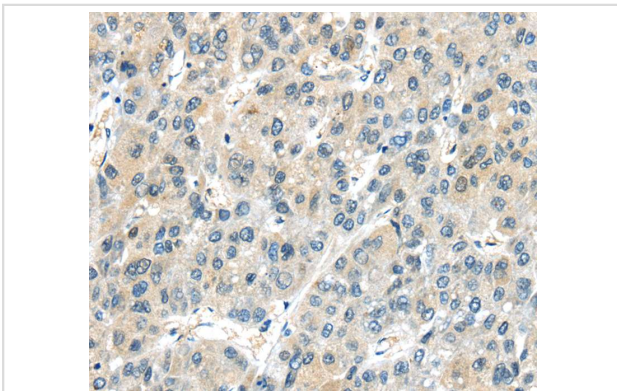
Description

Product Name	AHI1 Antibody
Host Species	Rabbit
Clonality	Polyclonal
Purification	Antigen affinity purification.
Applications	IHC
Species Reactivity	Hu
Specificity	The antibody detects endogenous levels of total AHI1 protein.
Immunogen Type	Peptide
Immunogen Description	Synthetic peptide of human Abelson helper integration site 1
Target Name	AHI1
Other Names	ORF1; AHI-1; JBTS3; dJ71N10.1
Accession No.	Swiss-Prot:Q8N157Gene Accssion:NP_001128302
Uniprot	Q8N157
GeneID	54806;
Concentration	1.5mg/ml
Formulation	Rabbit IgG in pH7.4 PBS, 0.05% NaN ₃ , 40% Glycerol.
Storage	Store at -20°C

Application Details

Immunohistochemistry:1:25-1:100

Images



Immunohistochemical analysis of paraffin-embedded Human liver cancer tissue using #40189 at dilution 1/25.

Background

This gene is apparently required for both cerebellar and cortical development in humans. This gene mutations cause specific forms of Joubert syndrome-related disorders. Joubert syndrome (JS) is a recessively inherited developmental brain disorder with several identified causative chromosomal loci. Alternatively spliced transcript variants encoding different isoforms have been identified.

Note: This product is for in vitro research use only