

ORAI1(L1) Antibody

Catalog No: #40190

Orders: order@signalwayantibody.com

Support: tech@signalwayantibody.com

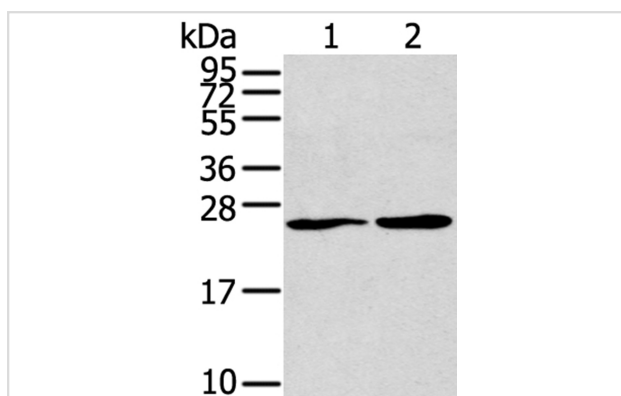
Description

Product Name	ORAI1(L1) Antibody
Host Species	Rabbit
Clonality	Polyclonal
Purification	Antigen affinity purification.
Applications	WB
Species Reactivity	Hu
Specificity	The antibody detects endogenous levels of total ORAI1(L1) protein.
Immunogen Type	Peptide
Immunogen Description	Synthetic peptide of human ORAI calcium release-activated calcium modulator 1
Target Name	ORAI1(L1)
Other Names	IMD9; TAM2; ORAT1; CRACM1; TMEM142A
Accession No.	Swiss-Prot:Q96D31Gene Accssion:NP_116179
Uniprot	Q96D31
GeneID	84876;
SDS-PAGE MW	33KD
Concentration	1.4mg/ml
Formulation	Rabbit IgG in pH7.4 PBS, 0.05% NaN ₃ , 40% Glycerol.
Storage	Store at -20°C

Application Details

Western blotting: 1:200-1:1000

Images



Gel: 12%SDS-PAGE

Lysates (from left to right): Jurkat and PC3 cell

Amount of lysate: 40ug per lane

Primary antibody: 1/250 dilution

Secondary antibody dilution: 1/8000

Exposure time: 10 minutes

Background

The protein encoded by this gene is a membrane calcium channel subunit that is activated by the calcium sensor STIM1 when calcium stores are depleted. This type of channel is the primary way for calcium influx into T-cells. Defects in this gene are a cause of immune dysfunction with T-cell

inactivation due to calcium entry defect type 1 (IDTICED1)?

Note: This product is for in vitro research use only