

## S1PR2 Antibody

Catalog No: #40195

Orders: [order@signalwayantibody.com](mailto:order@signalwayantibody.com)Support: [tech@signalwayantibody.com](mailto:tech@signalwayantibody.com)

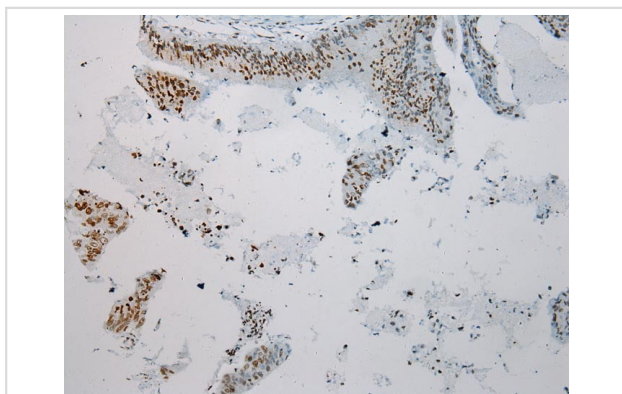
## Description

Product Name	S1PR2 Antibody
Host Species	Rabbit
Clonality	Polyclonal
Purification	Antigen affinity purification.
Applications	IHC
Species Reactivity	Hu
Specificity	The antibody detects endogenous levels of total S1PR2 protein.
Immunogen Type	Peptide
Immunogen Description	Synthetic peptide of human sphingosine-1-phosphate receptor 2
Target Name	S1PR2
Other Names	EDG5; H218; LPB2; S1P2; AGR16; EDG-5; Gpcr13
Accession No.	Swiss-Prot:O95136Gene Accssion:NP_004221
Uniprot	O95136
GeneID	9294;
Concentration	1.2mg/ml
Formulation	Rabbit IgG in pH7.4 PBS, 0.05% NaN <sub>3</sub> , 40% Glycerol.
Storage	Store at -20°C

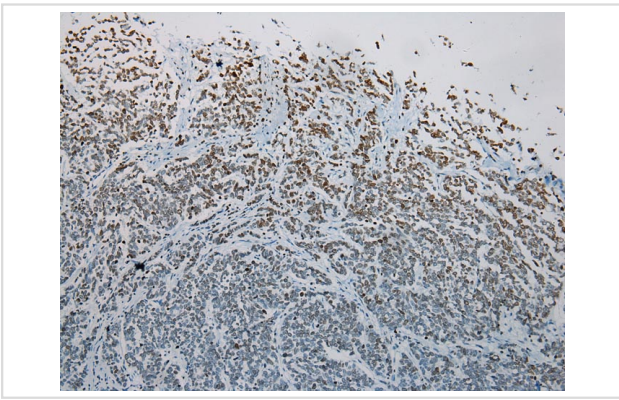
## Application Details

Immunohistochemistry: 1:100-1:200

## Images



Immunohistochemical analysis of paraffin-embedded Human Colorectal cancer tissue using #40195 at dilution 1/100.



Immunohistochemical analysis of paraffin-embedded Human Lung cancer tissue using #40195 at dilution 1/100.

## Background

This gene encodes a member of the G protein-coupled receptors, as well as the EDG family of proteins. This protein participates in sphingosine 1-phosphate-induced cell proliferation, survival, and transcriptional activation?

Note: This product is for in vitro research use only