

## NUF2 Antibody

Catalog No: #40196

Orders: [order@signalwayantibody.com](mailto:order@signalwayantibody.com)Support: [tech@signalwayantibody.com](mailto:tech@signalwayantibody.com)

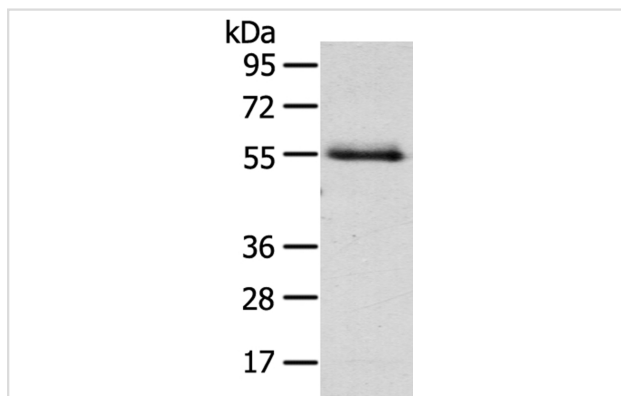
## Description

Product Name	NUF2 Antibody
Host Species	Rabbit
Clonality	Polyclonal
Purification	Antigen affinity purification.
Applications	WB
Species Reactivity	Hu
Specificity	The antibody detects endogenous levels of total NUF2 protein.
Immunogen Type	Peptide
Immunogen Description	Synthetic peptide corresponding to residues near the C terminal of human NUF2, NDC80 kinetochore complex component
Target Name	NUF2
Other Names	CDCA1; CT106; NUF2R
Accession No.	Swiss-Prot:Q9BZD4Gene Accssion:NP_113611
Uniprot	Q9BZD4
GeneID	83540;
SDS-PAGE MW	54KD
Concentration	0.9mg/ml
Formulation	Rabbit IgG in pH7.4 PBS, 0.05% NaN <sub>3</sub> , 40% Glycerol.
Storage	Store at -20°C

## Application Details

Western blotting: 1:200-1:1000

## Images



Gel: 8%SDS-PAGE

Lysate: 40ug Human normal liver tissuePrimary antibody:  
1/200 dilution

Secondary antibody dilution: 1/8000

Exposure time: 1 minute

## Background

This gene encodes a protein that is highly similar to yeast Nuf2, a component of a conserved protein complex associated with the centromere. Yeast

Nuf2 disappears from the centromere during meiotic prophase when centromeres lose their connection to the spindle pole body, and plays a regulatory role in chromosome segregation.

---

Note: This product is for in vitro research use only