

EMR1 antibody

Catalog No: #22512

Orders: order@signalwayantibody.comSupport: tech@signalwayantibody.com

Description

Product Name	EMR1 antibody
Host Species	Rabbit
Clonality	Polyclonal
Purification	Purified by antigen-affinity chromatography.
Applications	WB IHC
Species Reactivity	Hu
Immunogen Type	Recombinant protein
Immunogen Description	Recombinant protein fragment contain a sequence corresponding to a region within amino acids 626 and 859 of Human EMR1
Target Name	EMR1
Other Names	TM7LN3
Accession No.	Swiss-Prot:Q14246Gene ID:2015
Uniprot	Q14246
GeneID	2015;
Concentration	1mg/ml
Formulation	Supplied in 0.1M Tris-buffered saline with 10% Glycerol (pH7.0). 0.01% Thimerosal was added as a preservative.
Storage	Store at -20°C for long term preservation (recommended). Store at 4°C for short term use.

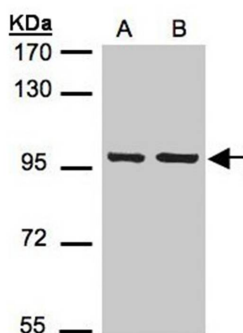
Application Details

Predicted MW: 98kd

Western blotting: 1:500-1:3000

Immunohistochemistry: 1:100-1:250

Images



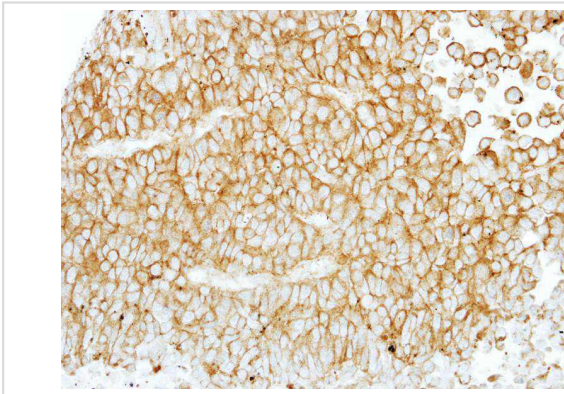
Sample(30 ug of whole cell lysate)

A: A431

B: H1299

7.5% SDS PAGE

Primary antibody diluted at 1: 1000



Immunohistochemical analysis of paraffin-embedded PC13 xenograft, using EMR1 antibody at 1: 100 dilution.

Background

This gene encodes a protein that has a domain resembling seven transmembrane G protein-coupled hormone receptors (7TM receptors) at its C-terminus. The N-terminus of the encoded protein has six EGF-like modules, separated from the transmembrane segments by a serine/threonine-rich domain, a feature reminiscent of mucin-like, single-span, integral membrane glycoproteins with adhesive properties. [provided by RefSeq]

Note: This product is for in vitro research use only