

## LONP1 Antibody

Catalog No: #40199

Orders: [order@signalwayantibody.com](mailto:order@signalwayantibody.com)Support: [tech@signalwayantibody.com](mailto:tech@signalwayantibody.com)

## Description

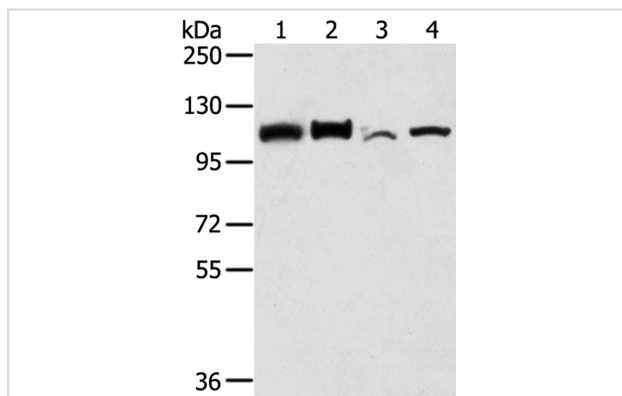
Product Name	LONP1 Antibody
Host Species	Rabbit
Clonality	Polyclonal
Purification	Antigen affinity purification.
Applications	WB IHC
Species Reactivity	Hu Ms
Specificity	The antibody detects endogenous levels of total LONP1 protein.
Immunogen Type	Peptide
Immunogen Description	Synthetic peptide corresponding to residues near the C terminal of human lon peptidase 1, mitochondrial
Target Name	LONP1
Other Names	LON; LONP; PIM1; hLON; LonHS; PRSS15
Accession No.	Swiss-Prot:P36776Gene Accssion:NP_001263408
Uniprot	P36776
GeneID	9361;
SDS-PAGE MW	106KD
Concentration	1.6mg/ml
Formulation	Rabbit IgG in pH7.4 PBS, 0.05% NaN <sub>3</sub> , 40% Glycerol.
Storage	Store at -20°C

## Application Details

Western blotting: 1:500-1:2000

Immunohistochemistry:1:25-1:100

## Images



Gel: 6%SDS-PAGE

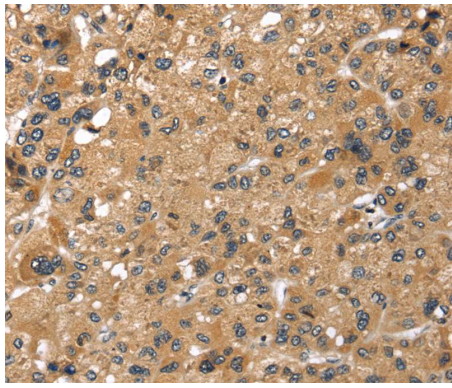
Lysates (from left to right): HeLa, hepg2, NIH/3T3 and A431 cell

Amount of lysate: 40ug per lane

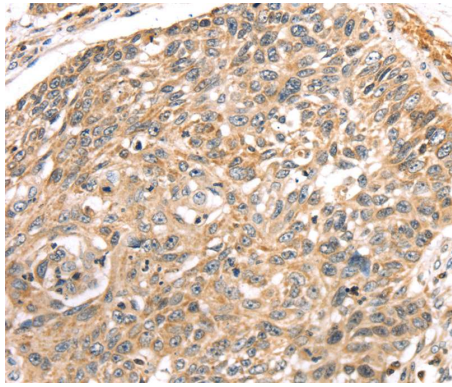
Primary antibody: 1/250 dilution

Secondary antibody dilution: 1/8000

Exposure time: 30 seconds



Immunohistochemical analysis of paraffin-embedded Human liver cancer tissue using #40199 at dilution 1/25.



Immunohistochemical analysis of paraffin-embedded Human lung cancer tissue using #40199 at dilution 1/25.

## Background

This gene encodes a mitochondrial matrix protein that belongs to the Lon family of ATP-dependent proteases. This protein mediates the selective degradation of misfolded, unassembled or oxidatively damaged polypeptides in the mitochondrial matrix. It may also have a chaperone function in the assembly of inner membrane protein complexes, and participate in the regulation of mitochondrial gene expression and maintenance of the integrity of the mitochondrial genome.?

Note: This product is for in vitro research use only