

LZTS1 Antibody

Catalog No: #40201

Orders: order@signalwayantibody.comSupport: tech@signalwayantibody.com

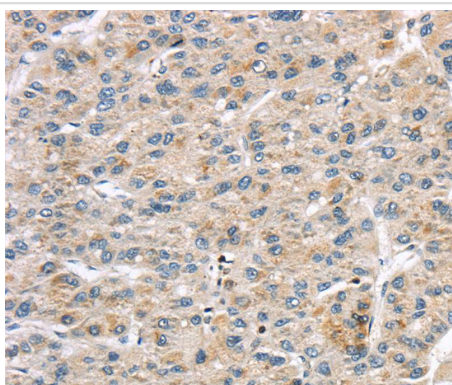
Description

Product Name	LZTS1 Antibody
Host Species	Rabbit
Clonality	Polyclonal
Purification	Antigen affinity purification.
Applications	IHC
Species Reactivity	Hu Ms Rt
Specificity	The antibody detects endogenous levels of total LZTS1 protein.
Immunogen Type	Peptide
Immunogen Description	Synthetic peptide corresponding to residues near the N terminal of human leucine zipper, putative tumor suppressor 1
Target Name	LZTS1
Other Names	F37; FEZ1
Accession No.	Swiss-Prot:Q9Y250Gene Accssion:NP_066300
Uniprot	Q9Y250
GeneID	11178;
Concentration	1mg/ml
Formulation	Rabbit IgG in pH7.4 PBS, 0.05% NaN ₃ , 40% Glycerol.
Storage	Store at -20°C

Application Details

Immunohistochemistry:1:10-1:50

Images



Immunohistochemical analysis of paraffin-embedded Human liver cancer tissue using #40201 at dilution 1/20.

Background

This gene encodes a tumor suppressor protein that is ubiquitously expressed in normal tissues. In uveal melanomas, expression of this protein is silenced in rapidly metastasizing and metastatic tumor cells but has normal expression in slowly metastasizing or nonmetastasizing tumor cells. This

protein may have a role in cell-cycle control by interacting with the Cdk1/cyclinB1 complex. This gene is located on chromosomal region 8p22. Loss of heterozygosity (LOH) in the 8p arm is a common characteristic of many types of cancer.

Note: This product is for in vitro research use only