

## PLAGL2 Antibody

Catalog No: #40205

Orders: [order@signalwayantibody.com](mailto:order@signalwayantibody.com)Support: [tech@signalwayantibody.com](mailto:tech@signalwayantibody.com)

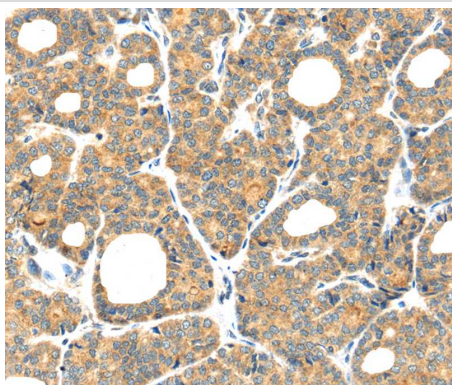
## Description

Product Name	PLAGL2 Antibody
Host Species	Rabbit
Clonality	Polyclonal
Purification	Antigen affinity purification.
Applications	IHC
Species Reactivity	Hu
Specificity	The antibody detects endogenous levels of total PLAGL2 protein.
Immunogen Type	Peptide
Immunogen Description	Synthetic peptide corresponding to residues near the N terminal of human pleiomorphic adenoma gene-like 2
Target Name	PLAGL2
Other Names	ZNF900
Accession No.	Swiss-Prot:Q9UPG8Gene Accssion:NP_002648
Uniprot	Q9UPG8
GeneID	5326;
Concentration	2.1mg/ml
Formulation	Rabbit IgG in pH7.4 PBS, 0.05% NaN <sub>3</sub> , 40% Glycerol.
Storage	Store at -20°C

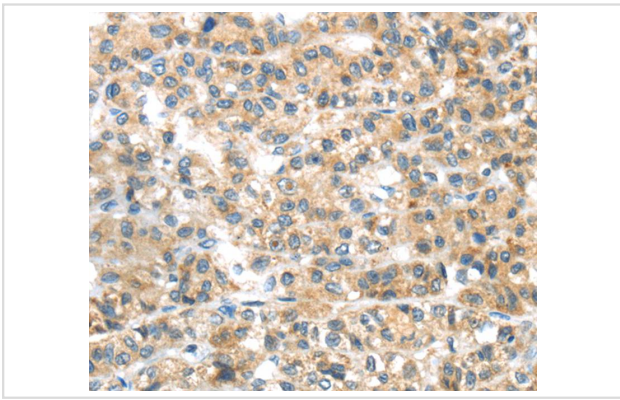
## Application Details

Immunohistochemistry:1:25-1:100

## Images



Immunohistochemical analysis of paraffin-embedded Human thyroid cancer tissue using #40205 at dilution 1/30.



Immunohistochemical analysis of paraffin-embedded Human liver cancer tissue using #40205 at dilution 1/30.

## Background

Pleiomorphic adenoma gene-like 2 is a zinc-finger protein that recognizes DNA and/or RNA.

Note: This product is for in vitro research use only