

RHCE Antibody

Catalog No: #40210

Orders: order@signalwayantibody.comSupport: tech@signalwayantibody.com

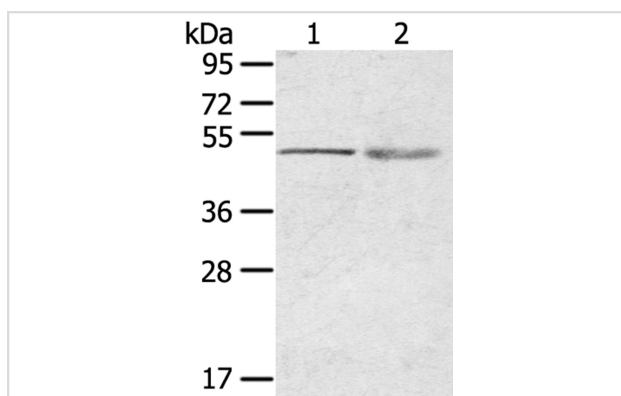
Description

Product Name	RHCE Antibody
Host Species	Rabbit
Clonality	Polyclonal
Purification	Antigen affinity purification.
Applications	WB
Species Reactivity	Hu
Specificity	The antibody detects endogenous levels of total RHCE protein.
Immunogen Type	Peptide
Immunogen Description	Synthetic peptide of human Rh blood group, CcEe antigens
Target Name	RHCE
Other Names	RH; RHC; RHE; Rh4; RHPI; RhVI; RH30A; RHIXB; RhVIII; CD240CE; RhIVb(J)
Accession No.	Swiss-Prot:P18577 Gene Accssion:NP_065231
Uniprot	P18577
GeneID	6006;
SDS-PAGE MW	46KD
Concentration	2.7mg/ml
Formulation	Rabbit IgG in pH7.4 PBS, 0.05% NaN ₃ , 40% Glycerol.
Storage	Store at -20°C

Application Details

Western blotting: 1:200-1:1000

Images



Gel: 8%SDS-PAGE
 Lysates (from left to right): 231 cell and human breast infiltrative duct tissue
 Amount of lysate: 40ug per lane
 Primary antibody: 1/200 dilution
 Secondary antibody dilution: 1/8000
 Exposure time: 1 minute

Background

The Rh blood group system is the second most clinically significant of the blood groups, second only to ABO. It is also the most polymorphic of the blood groups, with variations due to deletions, gene conversions, and missense mutations. The Rh blood group includes this gene which encodes both

the RhC and RhE antigens on a single polypeptide and a second gene which encodes the RhD protein. The classification of Rh-positive and Rh-negative individuals is determined by the presence or absence of the highly immunogenic RhD protein on the surface of erythrocytes.?

Note: This product is for in vitro research use only