

RHCG Antibody

Catalog No: #40211

Orders: order@signalwayantibody.com

Support: tech@signalwayantibody.com

Description

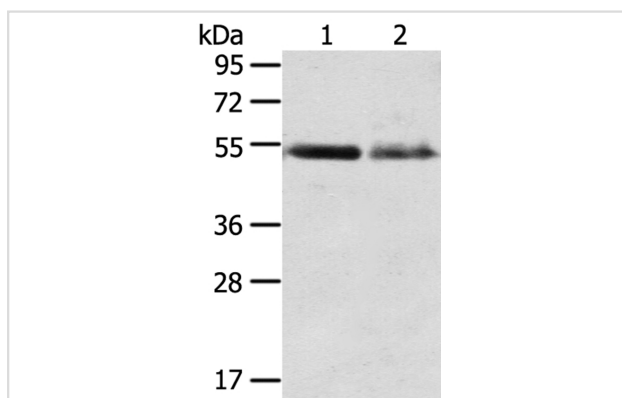
| | |
|-----------------------|---|
| Product Name | RHCG Antibody |
| Host Species | Rabbit |
| Clonality | Polyclonal |
| Purification | Antigen affinity purification. |
| Applications | WB IHC |
| Species Reactivity | Hu |
| Specificity | The antibody detects endogenous levels of total RHCG protein. |
| Immunogen Type | Peptide |
| Immunogen Description | Synthetic peptide of human Rh family, C glycoprotein |
| Target Name | RHCG |
| Other Names | RHGK; PDRC2; C15orf6; SLC42A3 |
| Accession No. | Swiss-Prot:Q9UBD6Gene Accssion:NP_057405 |
| Uniprot | Q9UBD6 |
| GeneID | 51458; |
| SDS-PAGE MW | 53KD |
| Concentration | 2.4mg/ml |
| Formulation | Rabbit IgG in pH7.4 PBS, 0.05% NaN ₃ , 40% Glycerol. |
| Storage | Store at -20°C |

Application Details

Western blotting: 1:200-1:1000

Immunohistochemistry:1:25-1:100

Images



Gel: 8%SDS-PAGE

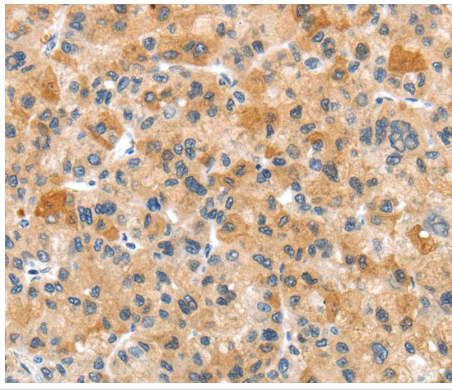
Lysates (from left to right): Human placenta and breast infiltrative duct tissue

Amount of lysate: 40ug per lane

Primary antibody: 1/550 dilution

Secondary antibody dilution: 1/8000

Exposure time: 5 minutes



Immunohistochemical analysis of paraffin-embedded Human liver cancer tissue using #40211 at dilution 1/35.

Background

RHCG (Rhesus blood group family type C glycoprotein), also known as RHGK (Rh glycoprotein kidney), PDRC2 (tumor-related protein DRC2) or SLC42A3, is a multi-pass membrane protein with three potential N-glycosylation sites that belongs to the Rh subfamily of the ammonium transporter family. Expressed in a wide variety of tissues with predominant expression in adult and fetal kidney, RHCg localizes to the apical and/or basolateral cell membrane (depending on the species) and is believed to function as a non-erythroid, bidirectional, electroneutral ammonium transporter.

Note: This product is for in vitro research use only