

SLC24A6 Antibody

Catalog No: #40213

Orders: order@signalwayantibody.comSupport: tech@signalwayantibody.com

Description

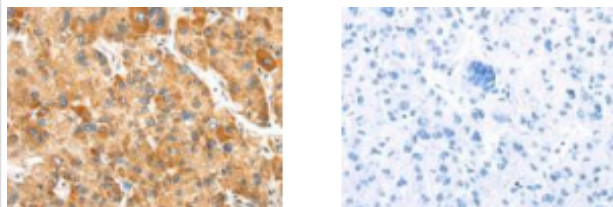
Product Name	SLC24A6 Antibody
Host Species	Rabbit
Clonality	Polyclonal
Purification	Antigen affinity purification.
Applications	ELISA, IHC
Species Reactivity	Hu
Specificity	The antibody detects endogenous levels of total SLC24A6 protein.
Immunogen Type	Peptide
Immunogen Description	Synthetic peptide corresponding to a region derived from internal residues of human solute carrier family 8 (sodium/lithium/calcium exchanger), member B1
Target Name	SLC24A6
Other Names	NCLX; NCKX6; SLC24A6
Accession No.	Swiss-Prot:Q6J4K2Gene Accssion:NP_079235
Uniprot	Q6J4K2
GeneID	80024;
SDS-PAGE MW	64KD
Concentration	0.4 mg/ml
Formulation	Rabbit IgG in pH7.4 PBS, 0.05% NaN ₃ , 40% Glycerol.
Storage	Store at -20°C

Application Details

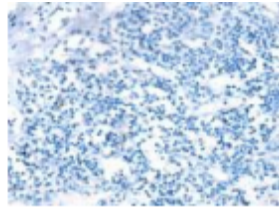
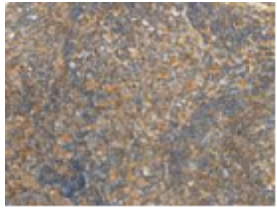
ELISA: 1:1000-1:2000

Immunohistochemistry:1:25-1:100

Images



The image on the left is immunohistochemistry of paraffin-embedded Human liver cancer tissue using SLC8B1 Antibody at dilution 1/20, on the right is treated with synthetic peptide. (Original magnification: Γ 200)



The image on the left is immunohistochemistry of paraffin-embedded Human tonsil tissue using SLC8B1 Antibody at dilution 1/20, on the right is treated with synthetic peptide. (Original magnification: \times 200)

Background

SLC24A6 belongs to a family of potassium-dependent sodium/calcium exchangers that maintain cellular calcium homeostasis through the electrogenic countertransport of 4 sodium ions for 1 calcium ion and 1 potassium ion.

Note: This product is for in vitro research use only