

SLC5A9 Antibody

Catalog No: #40214

Orders: order@signalwayantibody.com

Support: tech@signalwayantibody.com

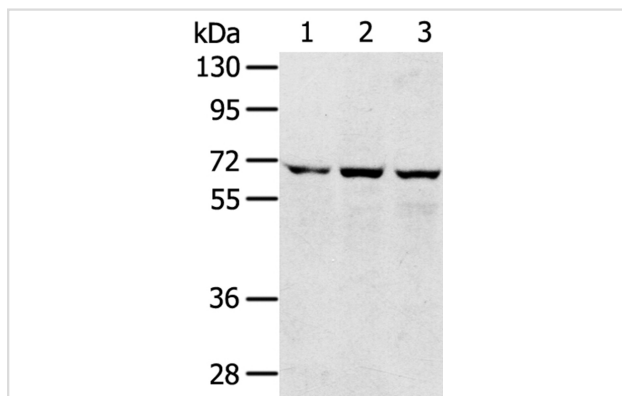
Description

Product Name	SLC5A9 Antibody
Host Species	Rabbit
Clonality	Polyclonal
Purification	Antigen affinity purification.
Applications	WB
Species Reactivity	Hu
Specificity	The antibody detects endogenous levels of total SLC5A9 protein.
Immunogen Type	Peptide
Immunogen Description	Synthetic peptide corresponding to residues near the C terminal of human solute carrier family 5 (sodium/sugar cotransporter), member 9
Target Name	SLC5A9
Other Names	SGLT4
Accession No.	Swiss-Prot:Q2M3M2Gene Accssion:NP_001011547
Uniprot	Q2M3M2
GeneID	200010;
SDS-PAGE MW	74KD
Concentration	2.6mg/ml
Formulation	Rabbit IgG in pH7.4 PBS, 0.05% NaN ₃ , 40% Glycerol.
Storage	Store at -20°C

Application Details

Western blotting: 1:500-1:2000

Images



Gel: 8%SDS-PAGE
 Lysates (from left to right): 293T, hepg2 and A172 cell
 Amount of lysate: 40ug per lane
 Primary antibody: 1/300 dilution
 Secondary antibody dilution: 1/8000
 Exposure time: 1 minute

Background

SGLT-4 (sodium/glucose cotransporter 4), also known as SLC5A9 (solute carrier family 5 member 9), is a 681 amino acid multi-pass membrane

protein that participates in the sodium-dependent transport of D-fructose, D-mannose and D-glucose. A member of the sodium:solute symporter (SSF) family, SGLT-4 is found in small intestine and kidney.

Note: This product is for in vitro research use only