

ROR1 Antibody

Catalog No: #40217

Orders: order@signalwayantibody.comSupport: tech@signalwayantibody.com

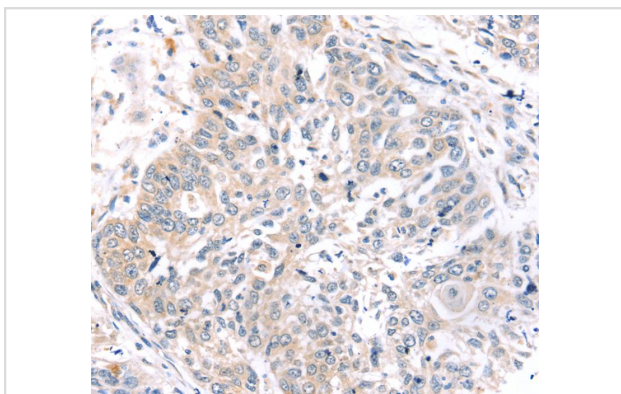
Description

Product Name	ROR1 Antibody
Host Species	Rabbit
Clonality	Polyclonal
Purification	Antigen affinity purification.
Applications	IHC
Species Reactivity	Hu Ms
Specificity	The antibody detects endogenous levels of total ROR1 protein.
Immunogen Type	Peptide
Immunogen Description	Synthetic peptide corresponding to a region derived from internal residues of human receptor tyrosine kinase-like orphan receptor 1
Target Name	ROR1
Other Names	NTRKR1; dJ537F10.1
Accession No.	Swiss-Prot:Q01973Gene Accssion:NP_005003
Uniprot	Q01973
GeneID	4919;
Concentration	2.6mg/ml
Formulation	Rabbit IgG in pH7.4 PBS, 0.05% NaN ₃ , 40% Glycerol.
Storage	Store at -20°C

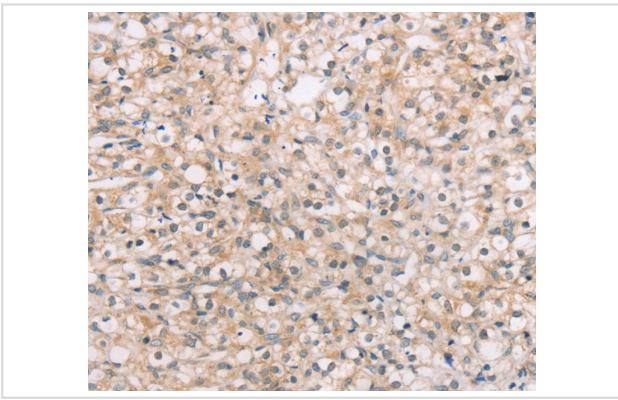
Application Details

Immunohistochemistry:1:25-1:100

Images



Immunohistochemical analysis of paraffin-embedded Human lung cancer tissue using #40217 at dilution 1/45.



Immunohistochemical analysis of paraffin-embedded Human prostate cancer tissue using #40217 at dilution 1/45.

Background

This gene encodes a receptor tyrosine kinase-like orphan receptor that modulates neurite growth in the central nervous system. The encoded protein is a glycosylated type I membrane protein that belongs to the ROR subfamily of cell surface receptors. It is a pseudokinase that lacks catalytic activity and may interact with the non-canonical Wnt signalling pathway. This gene is highly expressed during early embryonic development but expressed at very low levels in adult tissues. Increased expression of this gene is associated with B-cell chronic lymphocytic leukaemia. Alternative splicing results in multiple transcript variants encoding different isoforms.

Note: This product is for in vitro research use only