

SPARCL1 Antibody

Catalog No: #40219

Orders: order@signalwayantibody.comSupport: tech@signalwayantibody.com

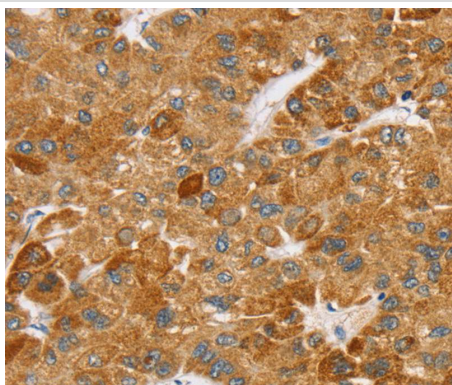
Description

Product Name	SPARCL1 Antibody
Host Species	Rabbit
Clonality	Polyclonal
Purification	Antigen affinity purification.
Applications	IHC
Species Reactivity	Hu
Specificity	The antibody detects endogenous levels of total SPARCL1 protein.
Immunogen Type	Peptide
Immunogen Description	Synthetic peptide corresponding to a region derived from internal residues of human SPARC-like 1 (hevin)
Target Name	SPARCL1
Other Names	SC1; MAST9; PIG33; MAST 9
Accession No.	Swiss-Prot:Q14515Gene Accssion:NP_004675
Uniprot	Q14515
GeneID	8404;
Concentration	1.6mg/ml
Formulation	Rabbit IgG in pH7.4 PBS, 0.05% NaN ₃ , 40% Glycerol.
Storage	Store at -20°C

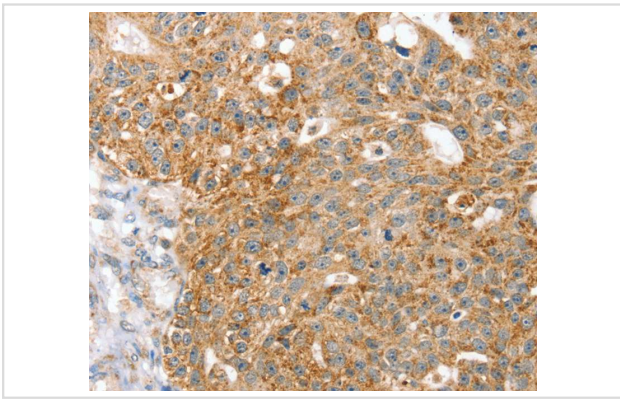
Application Details

Immunohistochemistry:1:25-1:100

Images



Immunohistochemical analysis of paraffin-embedded Human liver cancer tissue using #40219 at dilution 1/25.



Immunohistochemical analysis of paraffin-embedded Human breast cancer tissue using #40219 at dilution 1/25.

Background

SPARCL1 also known as high endothelial venule protein (Hevin) or MAST9, is a 664 amino acid member of the SPARC family of proteins. Highly expressed in lymph node, heart, lung, brain, skeletal muscle, ovary, colon and small intestine, SPARCL1 is a secreted protein that contains one EF-hand domain, one follistatin-like?

Note: This product is for in vitro research use only