

SPATA5L1 Antibody

Catalog No: #40220

Orders: order@signalwayantibody.comSupport: tech@signalwayantibody.com

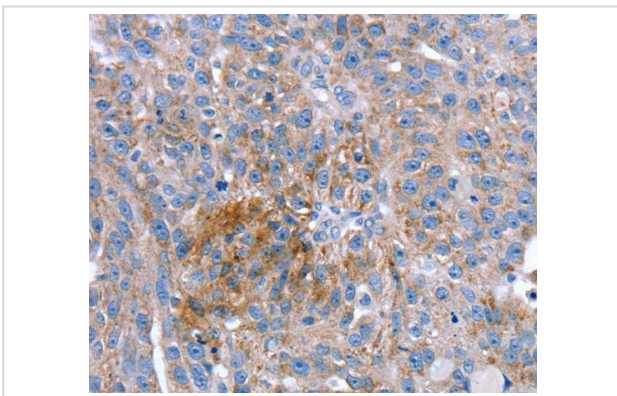
Description

| | |
|-----------------------|--|
| Product Name | SPATA5L1 Antibody |
| Host Species | Rabbit |
| Clonality | Polyclonal |
| Purification | Antigen affinity purification. |
| Applications | IHC |
| Species Reactivity | Hu |
| Specificity | The antibody detects endogenous levels of total SPATA5L1 protein. |
| Immunogen Type | Peptide |
| Immunogen Description | Synthetic peptide corresponding to residues near the C terminal of human spermatogenesis associated 5-like |
| Target Name | SPATA5L1 |
| Accession No. | Swiss-Prot:Q9BVQ7?Gene Accssion:NP_076968 |
| Uniprot | Q9BVQ7 |
| GeneID | 79029; |
| Concentration | 1.2mg/ml |
| Formulation | Rabbit IgG in pH7.4 PBS, 0.05% NaN ₃ , 40% Glycerol. |
| Storage | Store at -20°C |

Application Details

Immunohistochemistry:1:10-1:50

Images



Immunohistochemical analysis of paraffin-embedded Human breast cancer tissue using #40220 at dilution 1/20.

Background

SPATA5L1 (spermatogenesis-associated protein 5-like protein 1) is a 753 amino acid protein belonging to the AAA ATPase family and AFG2 subfamily. Single nucleotide polymorphisms (SNPs) present in SPATA5L1 at the glycine amidinotransferase (GATM)-SPATA5L1 locus have been found to correlate with glomerular filtration rate (GFR), having significant implications for kidney disease research. SPATA5L1 localizes to cytoplasm and exists as three alternatively spliced isoforms.

Note: This product is for in vitro research use only