

SPTAN1 Antibody

Catalog No: #40221

Orders: order@signalwayantibody.comSupport: tech@signalwayantibody.com

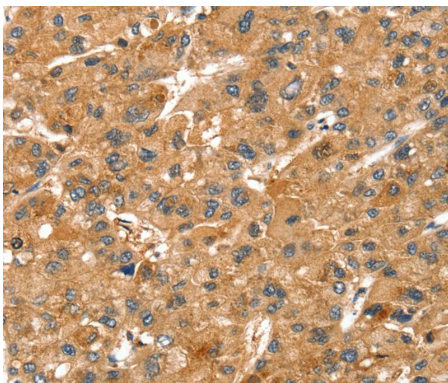
Description

Product Name	SPTAN1 Antibody
Host Species	Rabbit
Clonality	Polyclonal
Purification	Antigen affinity purification.
Applications	IHC
Species Reactivity	Hu Ms Rt
Specificity	The antibody detects endogenous levels of total SPTAN1 protein.
Immunogen Type	Peptide
Immunogen Description	Synthetic peptide corresponding to residues near the C terminal of human spectrin, alpha, non-erythrocytic 1
Target Name	SPTAN1
Other Names	NEAS; EIEE5; SPTA2
Accession No.	Swiss-Prot:Q13813Gene Accssion:NP_003118
Uniprot	Q13813
GeneID	6709;
Concentration	2.8mg/ml
Formulation	Rabbit IgG in pH7.4 PBS, 0.05% NaN ₃ , 40% Glycerol.
Storage	Store at -20°C

Application Details

Immunohistochemistry:1:25-1:100

Images



Immunohistochemical analysis of paraffin-embedded Human liver cancer tissue using #40221 at dilution 1/40.

Background

Spectrins are a family of filamentous cytoskeletal proteins that function as essential scaffold proteins that stabilize the plasma membrane and organize intracellular organelles. Spectrins are composed of alpha and beta dimers that associate to form tetramers linked in a head-to-head arrangement. This gene encodes an alpha spectrin that is specifically expressed in nonerythrocytic cells. The encoded protein has been implicated in other cellular functions including DNA repair and cell cycle regulation.

Note: This product is for in vitro research use only