

## SRGAP1 Antibody

Catalog No: #40222

Orders: [order@signalwayantibody.com](mailto:order@signalwayantibody.com)Support: [tech@signalwayantibody.com](mailto:tech@signalwayantibody.com)

## Description

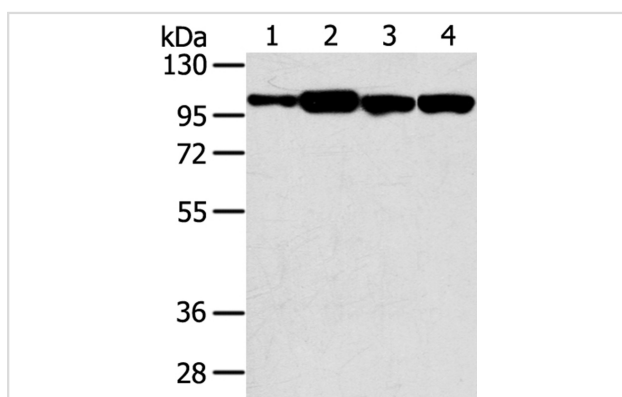
Product Name	SRGAP1 Antibody
Host Species	Rabbit
Clonality	Polyclonal
Purification	Antigen affinity purification.
Applications	WB IHC
Species Reactivity	Hu Ms
Specificity	The antibody detects endogenous levels of total SRGAP1 protein.
Immunogen Type	Peptide
Immunogen Description	Synthetic peptide corresponding to residues near the C terminal of human SLIT-ROBO Rho GTPase activating protein 1
Target Name	SRGAP1
Other Names	ARHGAP13
Accession No.	Swiss-Prot:Q7Z6B7 Gene Accssion:NP_065813
Uniprot	Q7Z6B7
GeneID	57522;
SDS-PAGE MW	124KD
Concentration	1.6mg/ml
Formulation	Rabbit IgG in pH7.4 PBS, 0.05% NaN <sub>3</sub> , 40% Glycerol.
Storage	Store at -20°C

## Application Details

Western blotting: 1:500-1:2000

Immunohistochemistry: 1:100-1:200

## Images



Gel: 6%SDS-PAGE

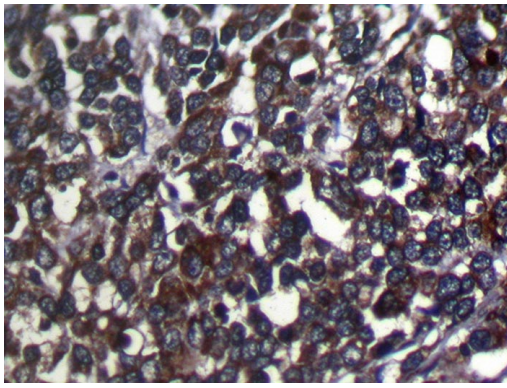
Lysates (from left to right): Hepg2, TM4, 293T and NIH/3T3 cell

Amount of lysate: 40ug per lane

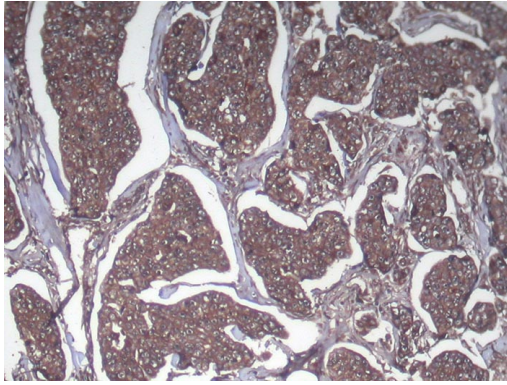
Primary antibody: 1/200 dilution

Secondary antibody dilution: 1/8000

Exposure time: 20 seconds



Immunohistochemical analysis of paraffin-embedded Human Liver cancer tissue using #40222 at dilution 1/100.



Immunohistochemical analysis of paraffin-embedded Human Breast cancer tissue using #40222 at dilution 1/100.

## Background

SRGAP1 contains an FCH (Fes/CIP4 homology) domain, a Rho-GAP domain and an SH3 domain. In the presence of Slit, SRGAP1 (via its SH3 domain) binds to the CC3 motif in robo (a protein responsible for mediating the repulsive effect of Slit) with higher affinity and inhibits Cdc42 activity in a robo/SRGAP-dependent manner. More specifically, SRGAP1 increases the intrinsic GTPase activity of Cdc42, thereby converting it to its inactive, GDP-bound form. Inactivation of Cdc42 ultimately leads to a decrease in actin polymerization.

Note: This product is for in vitro research use only