

## SSX2 Antibody

Catalog No: #40223

Orders: [order@signalwayantibody.com](mailto:order@signalwayantibody.com)Support: [tech@signalwayantibody.com](mailto:tech@signalwayantibody.com)

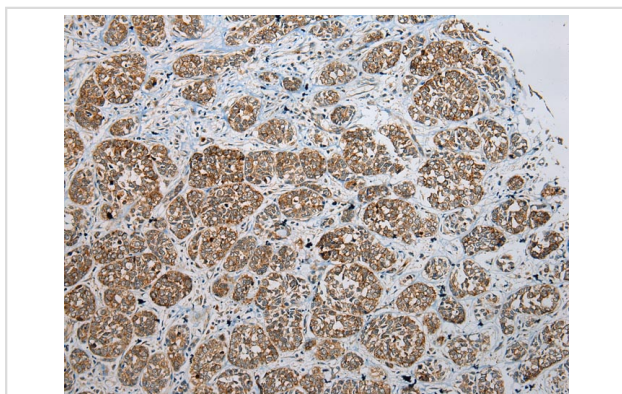
## Description

Product Name	SSX2 Antibody
Host Species	Rabbit
Clonality	Polyclonal
Purification	Antigen affinity purification.
Applications	IHC
Species Reactivity	Hu
Specificity	The antibody detects endogenous levels of total SSX2 protein.
Immunogen Type	Peptide
Immunogen Description	Synthetic peptide corresponding to residues near the N terminal of human synovial sarcoma, X breakpoint 2
Target Name	SSX2
Other Names	SSX; HD21; CT5.2; CT5.2A; HOM-MEL-40
Accession No.	Swiss-Prot:Q16385Gene Accssion:NP_783629
Uniprot	Q16385
GeneID	6757;727837;
Concentration	2mg/ml
Formulation	Rabbit IgG in pH7.4 PBS, 0.05% NaN <sub>3</sub> , 40% Glycerol.
Storage	Store at -20°C

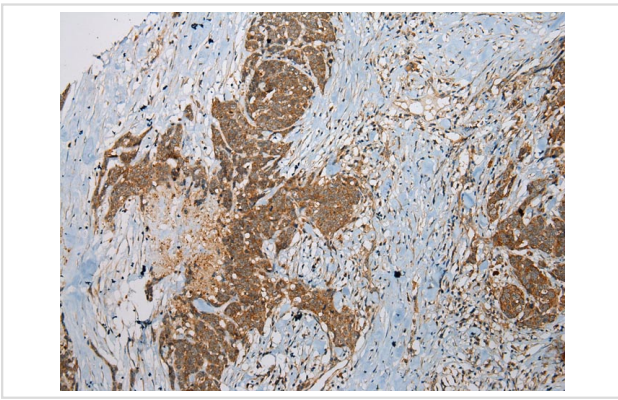
## Application Details

Immunohistochemistry: 1:100-1:200

## Images



Immunohistochemical analysis of paraffin-embedded Human Esophagus tissue using #40223 at dilution 1/100.



Immunohistochemical analysis of paraffin-embedded Human Thyroid tissue using #40223 at dilution 1/100.

## Background

The product of this gene belongs to the family of highly homologous synovial sarcoma X (SSX) breakpoint proteins. These proteins may function as transcriptional repressors. They are also capable of eliciting spontaneous humoral and cellular immune responses in cancer patients, and are potentially useful targets in cancer vaccine-based immunotherapy. This gene, and also the SSX1 and SSX4 family members, have been involved in t(X;18)(p11.2;q11.2) translocations that are characteristically found in all synovial sarcomas.

Note: This product is for in vitro research use only