

SSX4 Antibody

Catalog No: #40224

Orders: order@signalwayantibody.comSupport: tech@signalwayantibody.com

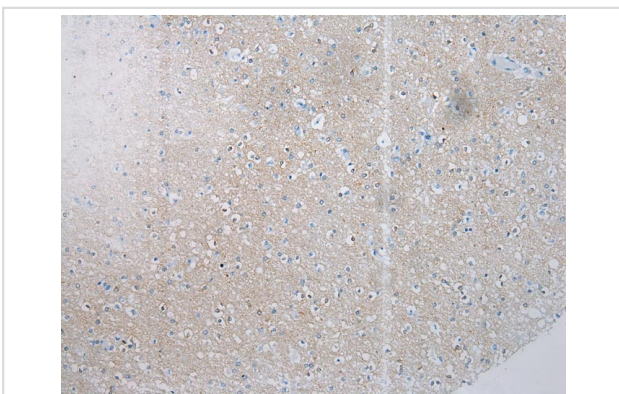
Description

Product Name	SSX4 Antibody
Host Species	Rabbit
Clonality	Polyclonal
Purification	Antigen affinity purification.
Applications	IHC
Species Reactivity	Hu
Specificity	The antibody detects endogenous levels of total SSX4 protein.
Immunogen Type	Peptide
Immunogen Description	Synthetic peptide corresponding to residues near the C terminal of human synovial sarcoma, X breakpoint 4
Target Name	SSX4
Other Names	CT5.4
Accession No.	Swiss-Prot:O60224 Gene Accssion:NP_005627
Uniprot	O60224
GeneID	548313;6759;
Concentration	1.1mg/ml
Formulation	Rabbit IgG in pH7.4 PBS, 0.05% NaN ₃ , 40% Glycerol.
Storage	Store at -20°C

Application Details

Immunohistochemistry: 1:100-1:200

Images



Immunohistochemical analysis of paraffin-embedded Human Brain tissue using #40224 at dilution 1/200.

Background

The product of this gene belongs to the family of highly homologous synovial sarcoma X (SSX) breakpoint proteins. These proteins may function as transcriptional repressors. They are also capable of eliciting spontaneously humoral and cellular immune responses in cancer patients, and are potentially useful targets in cancer vaccine-based immunotherapy.?

Note: This product is for in vitro research use only