

## ABCC8 Antibody

Catalog No: #40228

Orders: [order@signalwayantibody.com](mailto:order@signalwayantibody.com)Support: [tech@signalwayantibody.com](mailto:tech@signalwayantibody.com)

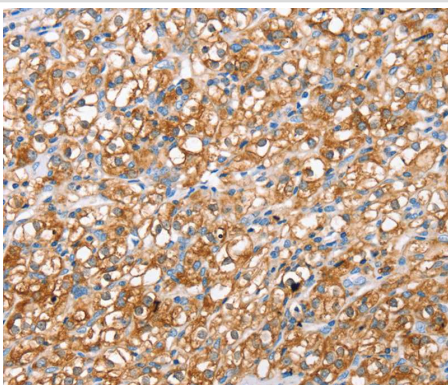
## Description

Product Name	ABCC8 Antibody
Host Species	Rabbit
Clonality	Polyclonal
Purification	Antigen affinity purification.
Applications	IHC
Species Reactivity	Hu
Specificity	The antibody detects endogenous levels of total ABCC8 protein.
Immunogen Type	Peptide
Immunogen Description	Synthetic peptide corresponding to residues near the C terminal of human ATP-binding cassette, sub-family C (CFTR/MRP), member 8
Target Name	ABCC8
Other Names	HI; SUR; HHF1; MRP8; PHHI; SUR1; ABC36; HRINS; TNDM2; SUR1delta2
Accession No.	Swiss-Prot:Q09428Gene Accssion:NP_000343
Uniprot	Q09428
GeneID	6833;
Concentration	2.2mg/ml
Formulation	Rabbit IgG in pH7.4 PBS, 0.05% NaN <sub>3</sub> , 40% Glycerol.
Storage	Store at -20°C

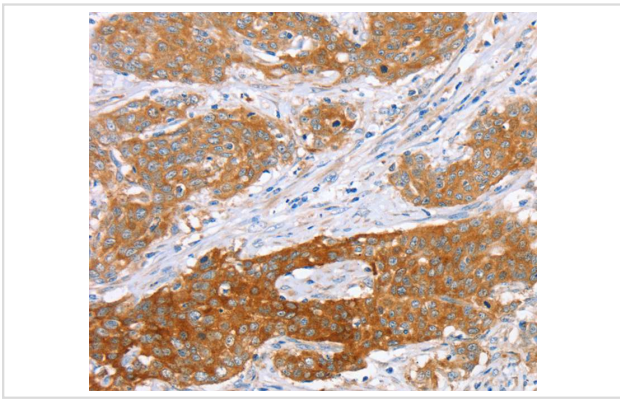
## Application Details

Immunohistochemistry:1:25-1:100

## Images



Immunohistochemical analysis of paraffin-embedded Human prostate cancer tissue using #40228 at dilution 1/40.



Immunohistochemical analysis of paraffin-embedded Human cervical cancer tissue using #40228 at dilution 1/40.

## Background

The protein encoded by this gene is a member of the superfamily of ATP-binding cassette (ABC) transporters. ABC proteins transport various molecules across extra- and intra-cellular membranes. ABC genes are divided into seven distinct subfamilies (ABC1, MDR/TAP, MRP, ALD, OABP, GCN20, White). This protein is a member of the MRP subfamily which is involved in multi-drug resistance. This protein functions as a modulator of ATP-sensitive potassium channels and insulin release.?

Note: This product is for in vitro research use only