

ABCC9 Antibody

Catalog No: #40229

Orders: order@signalwayantibody.com

Support: tech@signalwayantibody.com

Description

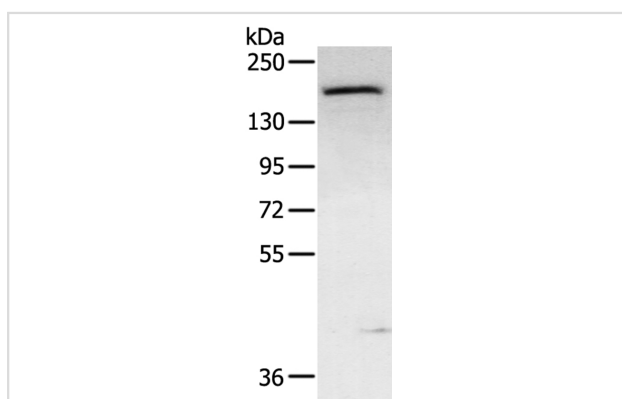
Product Name	ABCC9 Antibody
Host Species	Rabbit
Clonality	Polyclonal
Purification	Antigen affinity purification.
Applications	WB IHC
Species Reactivity	Hu Ms Rt
Specificity	The antibody detects endogenous levels of total ABCC9 protein.
Immunogen Type	Peptide
Immunogen Description	Synthetic peptide corresponding to residues near the C terminal of human ATP-binding cassette, sub-family C (CFTR/MRP), member 9
Target Name	ABCC9
Other Names	SUR2; ABC37; CANTU; CMD1O; ATFB12
Accession No.	Swiss-Prot:O60706Gene Accssion:NP_005682
Uniprot	O60706
GeneID	10060;
SDS-PAGE MW	175KD
Concentration	1.1mg/ml
Formulation	Rabbit IgG in pH7.4 PBS, 0.05% NaN ₃ , 40% Glycerol.
Storage	Store at -20°C

Application Details

Western blotting: 1:200-1:1000

Immunohistochemistry: 1:100-1:200

Images

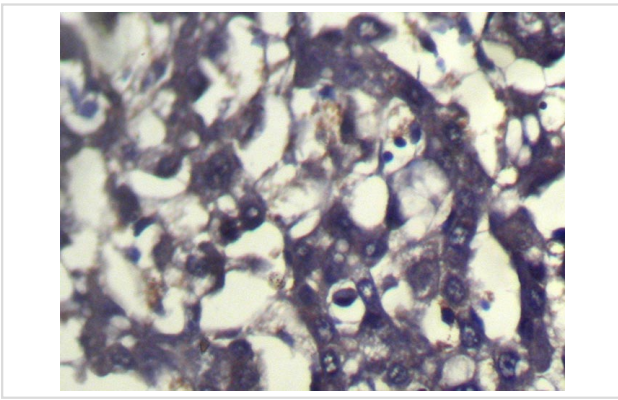


Gel: 6%SDS-PAGE

Lysate: 40ug Mouse bladder tissuePrimary antibody: 1/300 dilution

Secondary antibody dilution: 1/8000

Exposure time: 5 minutes



Immunohistochemical analysis of paraffin-embedded Human Liver cancer tissue using #40229 at dilution 1/100.

Background

The protein encoded by this gene is a member of the superfamily of ATP-binding cassette (ABC) transporters. ABC proteins transport various molecules across extra- and intra-cellular membranes. ABC genes are divided into seven distinct subfamilies (ABC1, MDR/TAP, MRP, ALD, OABP, GCN20, White). This protein is a member of the MRP subfamily which is involved in multi-drug resistance. This protein is thought to form ATP-sensitive potassium channels in cardiac, skeletal, and vascular and non-vascular smooth muscle.?

Note: This product is for in vitro research use only