

SDC3 Antibody

Catalog No: #40231

Orders: order@signalwayantibody.comSupport: tech@signalwayantibody.com

Description

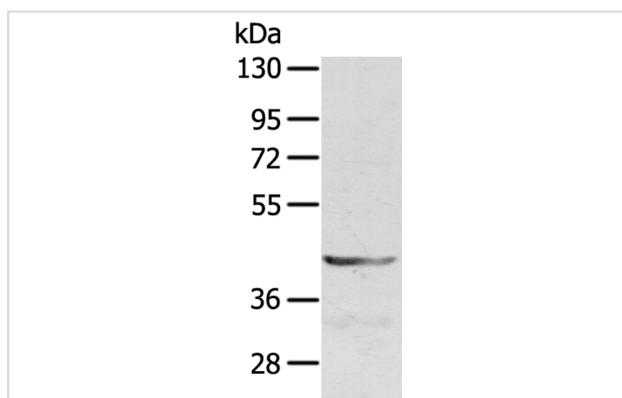
Product Name	SDC3 Antibody
Host Species	Rabbit
Clonality	Polyclonal
Purification	Antigen affinity purification.
Applications	WB IHC
Species Reactivity	Hu Ms Rt
Specificity	The antibody detects endogenous levels of total SDC3 protein.
Immunogen Type	Peptide
Immunogen Description	Synthetic peptide corresponding to residues near the C terminal of human syndecan 3
Target Name	SDC3
Other Names	SDCN; SYND3
Accession No.	Swiss-Prot:O75056Gene Accssion:NP_055469
Uniprot	O75056
GeneID	9672;
SDS-PAGE MW	45KD
Concentration	1.8mg/ml
Formulation	Rabbit IgG in pH7.4 PBS, 0.05% NaN ₃ , 40% Glycerol.
Storage	Store at -20°C

Application Details

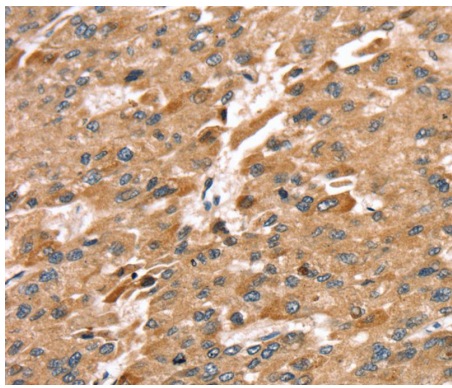
Western blotting: 1:200-1:1000

Immunohistochemistry:1:25-1:100

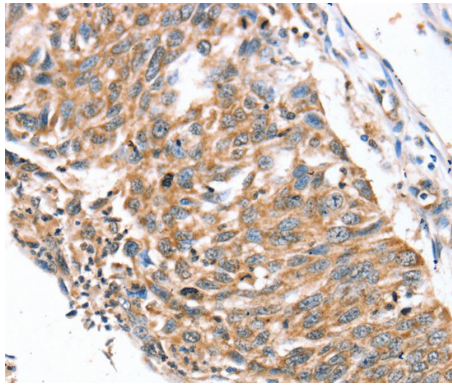
Images



Gel: 8%SDS-PAGE
Lysate: 40ug Jurkat cellPrimary antibody: 1/400 dilution
Secondary antibody dilution: 1/8000
Exposure time: 2 minutes



Immunohistochemical analysis of paraffin-embedded Human liver cancer tissue using #40231 at dilution 1/30.



Immunohistochemical analysis of paraffin-embedded Human lung cancer tissue using #40231 at dilution 1/30.

Background

The protein encoded by this gene belongs to the syndecan proteoglycan family. It may play a role in the organization of cell shape by affecting the actin cytoskeleton, possibly by transferring signals from the cell surface in a sugar-dependent mechanism. Allelic variants of this gene have been associated with obesity.

Note: This product is for in vitro research use only