

TBC1D4 Antibody

Catalog No: #40237

Orders: order@signalwayantibody.comSupport: tech@signalwayantibody.com

Description

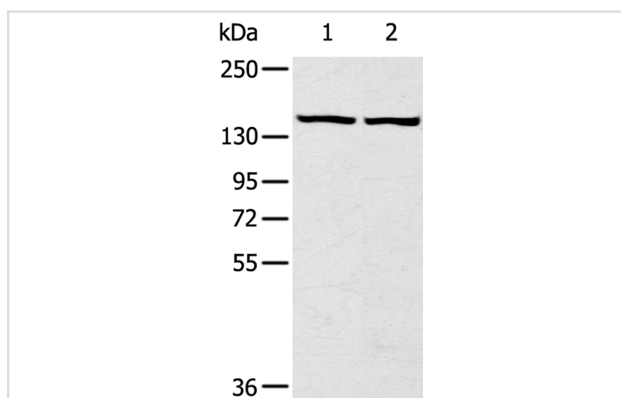
Product Name	TBC1D4 Antibody
Host Species	Rabbit
Clonality	Polyclonal
Purification	Antigen affinity purification.
Applications	WB IHC
Species Reactivity	Hu
Specificity	The antibody detects endogenous levels of total TBC1D4 protein.
Immunogen Type	Peptide
Immunogen Description	Synthetic peptide corresponding to residues near the C terminal of human TBC1 domain family, member 4
Target Name	TBC1D4
Other Names	AS160
Accession No.	Swiss-Prot:O60343Gene Accssion:NP_055647
Uniprot	O60343
GeneID	9882;
SDS-PAGE MW	147KD
Concentration	2.6mg/ml
Formulation	Rabbit IgG in pH7.4 PBS, 0.05% NaN ₃ , 40% Glycerol.
Storage	Store at -20°C

Application Details

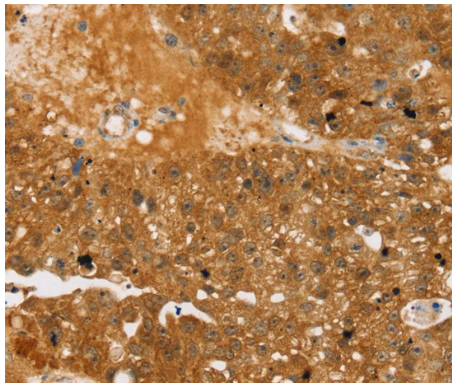
Western blotting: 1:500-1:2000

Immunohistochemistry:1:30-1:150

Images



Gel: 6%SDS-PAGE
 Lysates (from left to right): HeLa and hepg2 cell
 Amount of lysate: 40ug per lane
 Primary antibody: 1/320 dilution
 Secondary antibody dilution: 1/8000
 Exposure time: 5 seconds



Immunohistochemical analysis of paraffin-embedded Human breast cancer tissue using #40237 at dilution 1/40.

Background

TBC1 domain family member 4 (TBC1D4), also designated AS160, can be insulin- and/or AKT1-induced. Insulin-stimulated phosphorylation is required for GLUT4 translocation. TBC1D4 may play a role as a GTPase activating protein for proteins in the Rab family. It is expressed primarily in skeletal muscle and heart, as well as spleen, lymph node and leukocytes. Defects in the TBC1D4 gene may cause atopic dermatitis (AD), sometimes referred to as eczema, an atopic chronic skin disease. The skin of affected individuals reacts to irritants or allergens and becomes red, flaky and itchy. The skin is also more vulnerable to inflammations, and symptoms can grow or disappear over time.

Note: This product is for in vitro research use only