

TCERG1L Antibody

Catalog No: #40240

Orders: order@signalwayantibody.comSupport: tech@signalwayantibody.com

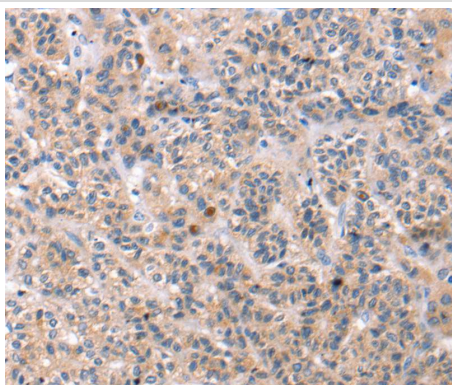
Description

Product Name	TCERG1L Antibody
Host Species	Rabbit
Clonality	Polyclonal
Purification	Antigen affinity purification.
Applications	IHC
Species Reactivity	Hu
Specificity	The antibody detects endogenous levels of total TCERG1L protein.
Immunogen Type	Peptide
Immunogen Description	Synthetic peptide corresponding to residues near the C terminal of human transcription elongation regulator 1-like
Target Name	TCERG1L
Accession No.	Swiss-Prot:Q5VWI1Gene Accssion:NP_777597
Uniprot	Q5VWI1
GeneID	256536;
Concentration	1.6mg/ml
Formulation	Rabbit IgG in pH7.4 PBS, 0.05% NaN ₃ , 40% Glycerol.
Storage	Store at -20°C

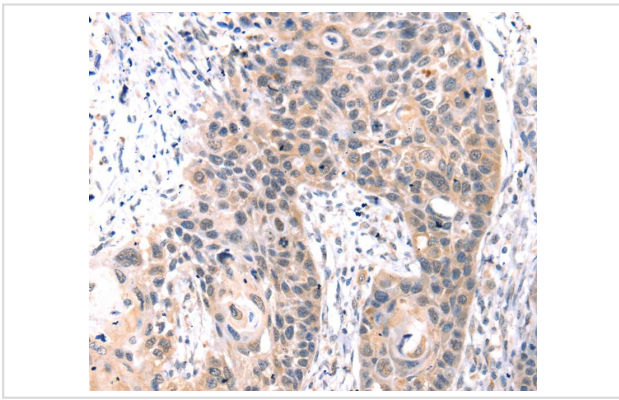
Application Details

Immunohistochemistry:1:25-1:100

Images



Immunohistochemical analysis of paraffin-embedded Human liver cancer tissue using #40240 at dilution 1/30.



Immunohistochemical analysis of paraffin-embedded Human esophagus cancer tissue using #40240 at dilution 1/30.

Background

TCERG1L (transcription elongation regulator 1-like protein) is a 586 amino acid protein that contains two FF domains and two WW domains. The gene that encodes TCERG1L contains just over 219,000 bases and maps to human chromosome 10q26.3. Spanning nearly 135 million base pairs and encoding nearly 1,200 genes, chromosome 10 makes up approximately 4.5% of the human genome. Several protein-coding genes, including those that encode chemokines, cadherins, excision repair proteins, early growth response factors (Egrs) and fibroblast growth receptors (FGFRs), are located on chromosome 10.

Note: This product is for in vitro research use only