

## THAP3 Antibody

Catalog No: #40242

Orders: [order@signalwayantibody.com](mailto:order@signalwayantibody.com)Support: [tech@signalwayantibody.com](mailto:tech@signalwayantibody.com)

## Description

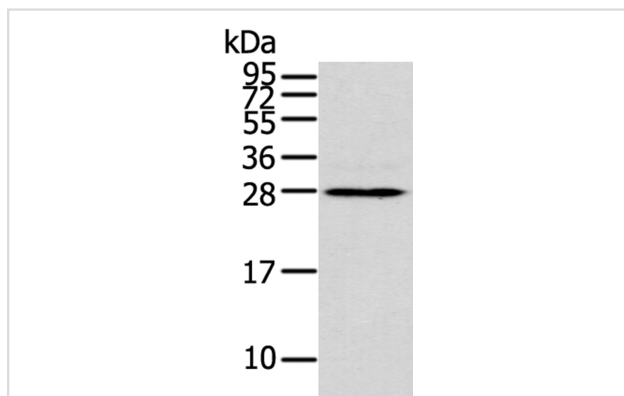
Product Name	THAP3 Antibody
Host Species	Rabbit
Clonality	Polyclonal
Purification	Antigen affinity purification.
Applications	WB IHC
Species Reactivity	Hu
Specificity	The antibody detects endogenous levels of total THAP3 protein.
Immunogen Type	Peptide
Immunogen Description	Synthetic peptide corresponding to residues near the C terminal of human THAP domain containing, apoptosis associated protein 3
Target Name	THAP3
Accession No.	Swiss-Prot:Q8WTV1 Gene Accssion:NP_001182682
Uniprot	Q8WTV1
GeneID	90326;
SDS-PAGE MW	27KD
Concentration	1.8mg/ml
Formulation	Rabbit IgG in pH7.4 PBS, 0.05% NaN <sub>3</sub> , 40% Glycerol.
Storage	Store at -20°C

## Application Details

Western blotting: 1:200-1:1000

Immunohistochemistry:1:25-1:100

## Images

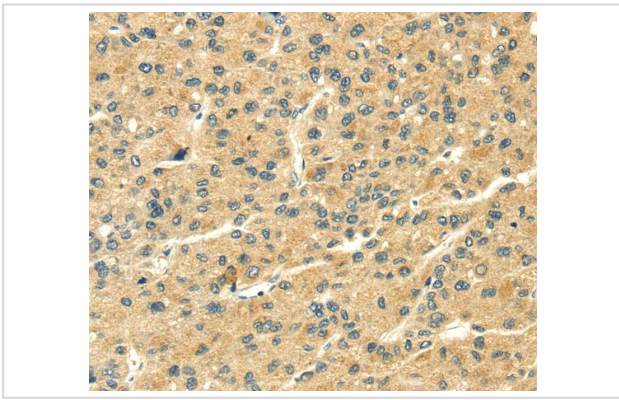


Gel: 12%SDS-PAGE

Lysate: 40ug 231 cell Primary antibody: 1/200 dilution

Secondary antibody dilution: 1/8000

Exposure time: 1 minute



Immunohistochemical analysis of paraffin-embedded Human liver cancer tissue using #40242 at dilution 1/20.

## Background

THAP3 (THAP domain-containing protein 3) is a 239 amino acid protein that contains one THAP-type zinc finger and exists as three alternatively spliced isoforms. The gene that encodes THAP3 contains roughly 10,721 bases and maps to human chromosome 1p36.31. Spanning about 260 million base pairs and comprising nearly 8% of the human genome, chromosome 1 is the largest human chromosome.?

Note: This product is for in vitro research use only