

THBS2 Antibody

Catalog No: #40245

Orders: order@signalwayantibody.comSupport: tech@signalwayantibody.com

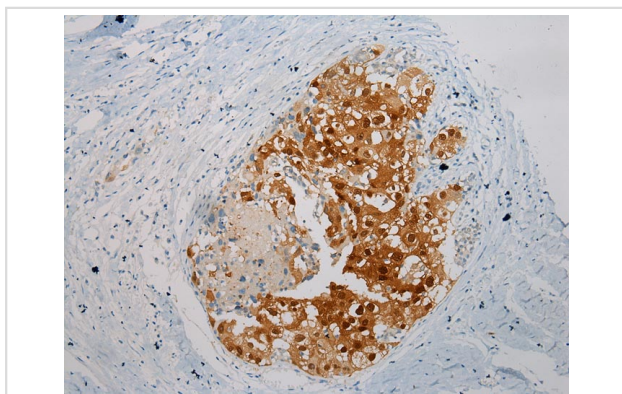
Description

Product Name	THBS2 Antibody
Host Species	Rabbit
Clonality	Polyclonal
Purification	Antigen affinity purification.
Applications	IHC
Species Reactivity	Hu Ms
Specificity	The antibody detects endogenous levels of total THBS2 protein.
Immunogen Type	Peptide
Immunogen Description	Synthetic peptide corresponding to residues near the C terminal of human thrombospondin 2
Target Name	THBS2
Other Names	TSP2
Accession No.	Swiss-Prot:P35442Gene Accssion:NP_003238
Uniprot	P35442
GeneID	7058;
Concentration	2mg/ml
Formulation	Rabbit IgG in pH7.4 PBS, 0.05% NaN ₃ , 40% Glycerol.
Storage	Store at -20°C

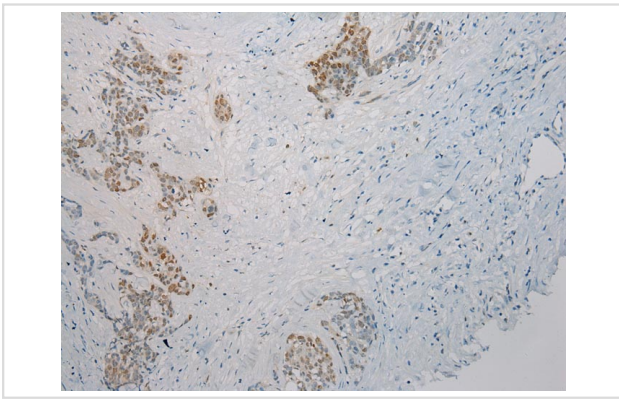
Application Details

Immunohistochemistry: 1:100-1:200

Images



Immunohistochemical analysis of paraffin-embedded Human Breast cancer tissue using #40245 at dilution 1/200.



Immunohistochemical analysis of paraffin-embedded Human Thyroid cancer tissue using #40245 at dilution 1/200.

Background

The protein encoded by this gene belongs to the thrombospondin family. It is a disulfide-linked homotrimeric glycoprotein that mediates cell-to-cell and cell-to-matrix interactions. This protein has been shown to function as a potent inhibitor of tumor growth and angiogenesis. Studies of the mouse counterpart suggest that this protein may modulate the cell surface properties of mesenchymal cells and be involved in cell adhesion and migration.?

Note: This product is for in vitro research use only